



INDIANA UNIVERSITY JACOBS SCHOOL OF MUSIC
OPERA AND BALLET THEATER



Sponsored by the IU Office of the Bicentennial, Office of the President,
and Office of the Provost & Executive Vice President.

FOR YOUR INFORMATION

Do you want more information about upcoming events at the Indiana University Jacobs School of Music? There are several ways to learn more about our recitals, concerts, lectures, and more!

Events Online

Visit our online events calendar at music.indiana.edu/events: an up-to-date and comprehensive listing of Jacobs School of Music performances and other events.

Events to Your Inbox

Subscribe to our weekly *Upcoming Events* email and several other electronic communications through go.iu.edu/24K1. Stay “in the know” about the hundreds of events the Jacobs School of Music offers each year, most of which are free!

In the News

Visit our website for news releases, links to recent reviews, and articles about the Jacobs School of Music: music.indiana.edu/news.

2019-20 Jacobs School of Music Season

Learn more about this year’s season, and reserve your seats by visiting music.indiana.edu/operaballet.

Musical Arts Center

The **Musical Arts Center (MAC) Box Office** is open M – F, 11:30 a.m. – 5:30 p.m. Call **812-855-7433** for information and ticket sales. Tickets are also available at the box office three hours before any ticketed performance. In addition, tickets can be ordered online at music.indiana.edu/boxoffice.

Entrance: The MAC lobby opens for all events one hour before the performance. The MAC auditorium opens one half hour before each performance.

Late Seating: Patrons arriving late will be seated at the discretion of the management.

IU Parking Garages

Valid IU Permit Holders

EM-P Permit: Free access to garages at all times.

Other Permits: Free access if entering after 5 p.m. any day of the week.

Non-permit Holders

Free Friday 6 p.m. – Monday 7 a.m.

Monday – Thursday: Maximum of \$10 after 5 p.m. (less if parked up to 90 minutes).

Please place unwanted programs in the marked receptacles in the lobby. Thank you for supporting a more sustainable environment!



JACOBS SCHOOL OF MUSIC

INDIANA UNIVERSITY

Bloomington

Two Hundred Eighty-Sixth Program of the 2019-20 Season

Indiana University Jacobs School of Music

Opera Theater

presents

as its 468th production

Parsifal

Music and Libretto by Richard Wagner

Based on the poem *Parzival*
by Wolfram von Eschenbach

Arthur Fagen, *Conductor*

Chris Alexander, *Stage Director*

S. Katy Tucker, *Set Designer*

Linda Pisano, *Costume Designer*

Todd Hensley, *Lighting Designer*

Walter Huff, *Chorus Master*

Brent Gault, *Children's Chorus Master*

Walter Althammer, *German Diction Coach*

Leraldo Anzaldúa, *Fight Choreographer*

Scott Heumann, *Supertitle Author*

The supertitles used in this production are owned by Houston Grand Opera
Patrick Summers, Artistic and Music Director; Perryn Leech, Managing Director

Parsifal was first performed at the Bayreuth
Festspielhaus in Bayreuth, Germany, in 1882.

Musical Arts Center

Sunday Afternoon, November Tenth

Two-Thirty O'Clock

Wednesday Evening, November Thirteenth

Six O'Clock

Saturday Evening, November Sixteenth

Six O'Clock



*Indiana University prohibits the unauthorized recording, publication,
and streaming of live performances. Please silence all electronic devices.*

Cast of Characters

Amfortas Mark Delavan
Titirel Dominic Barberi
Gurnemanz Kristinn Sigmundsson
Parsifal Chris Lysack
Klingsor Mark Schnaible
Kundry Renée Tatum
Erster Gralstritter Spencer Boyd
Zweiter Gralstritter Steele Fitzwater
Erster Knappe Kayla Eldridge
Zweiter Knappe Jing Zhang
Dritter Knappe Carl Rosenthal
Vierter Knappe Gregory McClelland

Blumenmädchen

Erste Gruppe

Ahyoung Jeong
Virginia Mims
Lauriane Tregan-Marcuz

Zweite Gruppe

Mary Catherine Wright-Beath
Hayley Abramowitz
Tal Heller

Stimme aus der Höhe

Amy Wooster (11/10)
Hunter Shaner (11/13)
Sara Dailey (11/16)

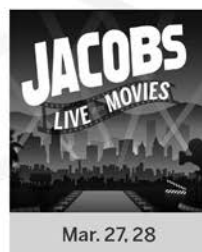
Supernumeraries

Eric Babin
Sam Connan
Aimes Dobbins
Dexter Griffin

Video Actor

Herzeleide Alison Calhoun

2019-20 SEASON



Subscribe and save!

Quartet Series

Choose any 4 performances from our season and also receive 1 complimentary ticket to our Concert Series.*

Concert Series

Includes all 4 of our NEW Concert Series performances

* Excludes Singing Hoosiers Spring Concert



JACOBS SCHOOL OF MUSIC
Indiana University Bloomington



812-855-7433

operaballet.indiana.edu

Opera Chorus

Hayley Abramowitz
Lindsey Allen
Jessica Bittner
Ivy Bott
Margaret Casella
Madeline Coffey
Sara Dailey
Anna Donnelly
Christina Dragnea
Karli Forte
Kay Frazier
Tal Heller
Jenna Kreider
Katherine Holobinko
Elise Hurwitz
Emily Jensen
Seowon Lee
Grace Lerew
Amane Machida
Brea Marshall
Nicole Melissas

Virginia Mims
Minjung Moon
Rachel Purvis
Shannon Richards
Lisa Shin
Lauriane Tregan-Marcuz
Savanna Webber
Amy Wooster
Mary Catherine Wright-Beath
Conner Allison
Steven Auster
Spencer Boyd
Joseph Calzada
Jack Canfield
Michael Colman
Victor DiNitto
Andrew Flanagan
Steele Fitzwater
Andrew Forsythe
Quinn Galyan
Garrett Godsey

Duncan Holzhall
Nathan Krishnaswami
Joey LaPlant
Justin Li
Sam Mathis
Gregory McClelland
Philip McCown
Eddie Mony
Izaya Perrier
Benjamin Plunkett
Solomon Reynolds
Trevor Ross
Brandan Sanchez
Hunter Shaner
Andrew Stack
Tislam Swift
Elijah Tash
Ethan Udovich
Rene Vazquez
Jesse Warren
Robert Wentz

Children's Choir

Jacey Best
Maria Colvard
Sophie Giedroc
Ethan Greene
Arwen Hwang
Kadi Kingsbury
Clara Manley
Ethan Manley
Callum Miles

Niccolo Miles
Brianna Neary
Madeline Norman
Tessa Perotti
Naina Prabhakar
Alayna Przybyla
Claire Przybyla
Marie Przybyla
Noel Przybyla

Malte Raff
Evelyn Steele
Rohnan Steele
Lauren Smith
Helena Tzetskova
Marcus Westphal
Tobias Westphal
Lucy Wrasse
Emerald Yee



CARDINAL
STAGE

DEC 12 – 29
at the Buskirk-Chumley Theater

They delivered the papers,
until they made the headlines...



A FAMILY HOLIDAY MUSICAL

FIND TICKETS
TODAY

cardinalstage.org
(812) 336-9300

Celebrating Indiana University's Bicentennial: *Parsifal* Returns!

Thanks to the IU Office of the Bicentennial, Office of the President, and Office of the Provost & Executive Vice President, *Parsifal*, the operatic epic and legend in Indiana University's 200-year history returns to Bloomington!

After 23 productions since its debut in 1949 and a 43-year absence, IU Jacobs School of Music Opera Theater brings new life to Richard Wagner's masterwork. Students comprising the orchestra, comprimario roles, chorus, and technical crews join an internationally acclaimed cast and creative team for this once-in-a-lifetime staging at the Musical Arts Center.

Thank you for joining us for this historic moment on our campus—enjoy the opera!

Parsifal at Indiana University

by Kevin Murphy

Director of Coaching and Music Administration

Welcome to IU Jacobs School of Music Opera Theater's production of *Parsifal*.

Mounting this production allows us to showcase the refined playing of the IU Philharmonic, led by Arthur Fagen, who has conducted multiple performances of *Parsifal* and *The Ring Cycle*; the amazing IU Opera chorus, led by Walter Huff; and our production team, which works tirelessly behind the scenes of every production to bring the designers' imaginations to life. Additionally, we've invited guest artists who perform at the Metropolitan Opera and other major theaters of the world to fill the principal roles, while our students perform the roles of Flower Maidens and Grail Knights alongside them.

Jacobs Dean Emeritus Wilfred Bain recognized that building an opera program would help grow Indiana University's reputation as having one of the greatest music schools in the world. A favorite quote of his: "You let me build you a fine opera department, and I'll have built you a fine music school. Opera is the meeting place of the arts. It embodies everything needed in the performance of music: orchestra, singers, chorus, technical departments, etc." Bain used *Parsifal* as the school's calling card, and it was noticed by both *Time* and *Life* magazines, among others.

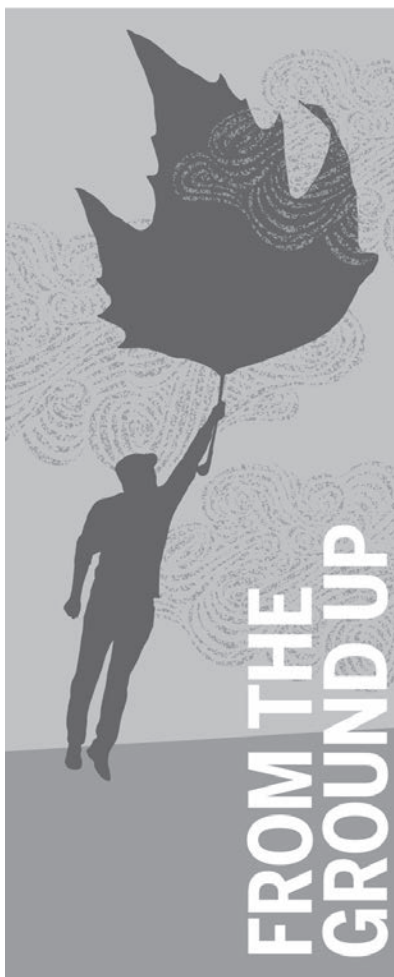
Jacobs Dean Emeritus Charles Webb and Dean Gwyn Richards helped carry on the tradition of keeping IU Opera Theater and its offerings robust. After the Musical Arts Center (MAC) opened its doors in 1972, patrons were wowed by its size as well as its backstage and orchestra pit, which are similar in scope to the Metropolitan Opera. In fact, the MAC was referenced by some in the opera world as "the Met of the Midwest."

My first experience with *Parsifal* was at the Metropolitan Opera, where I worked as an assistant conductor for many years. My wife, Heidi Grant Murphy, also on the faculty here at the Jacobs School, was the First Flower Maiden. I heard Jessye Norman and Waltraud Meier as Kundry; Kurt Moll, the amazing German bass, was Gurnemanz. James Levine led the Met orchestra—the experience was transcendent.



**DECEMBER
6-14**

RUTH N. HALLS THEATRE



**JANUARY
22-25**

STUDIO THEATRE

I've since worked on the piece when I was the head of music at Paris Opera, and although it's arguably one of Wagner's greatest, it's not performed nearly enough. Once everyone experiences our production, with more than 100 people on stage and in the pit, and a cast of amazing singers, one might leave the theater saying, "Only IU could have pulled that off!"

We have a director in Chris Alexander, who is steeped in Wagnerian tradition (he got to experience *Parsifal* in Bayreuth as a young boy when his father sang there) but who has a way of telling the story to a modern audience. Our set and video designer, Katy Tucker, is one of the finest artists working in opera today.

Utilizing high-tech effects and beautiful costumes by IU's award-winning designer Linda Pisano, Chris and Katy will wrap the audience in visuals on the level of *Game of Thrones* or *The Lord of the Rings*, creating a whole new dimension to this drama of the Knights and the Holy Grail.

Wagner called *Parsifal* *Ein Bühnenweihfestspiel* or Play for the Consecration of the Stage. In a sense, *Parsifal* is a holy or spiritual experience. And it's also a time commitment! At approximately five hours, including intermissions, Wagner seems to stop time and brings us into a unique sound world and atmosphere.

Personally, I'm so proud of our students, faculty, and staff, who have worked day and night to bring this masterpiece to life, here in Bloomington. In celebration of the Indiana University Bicentennial, nothing could be more fitting than a true consecration or reconsecration of our wonderful opera theater and music school, often referred to as one of the crown jewels of Indiana University.

Synopsis

Act I

Gurnemanz, an elder knight of the Holy Grail, awakens from sleep in a forest accompanied by his two squires. Two knights arrive to prepare a bath for their ailing king, Amfortas. They see Kundry, an ageless wild woman, rushing in to deliver a healing balsam from Arabia. Amfortas and his party arrive, accept Kundry's gift, and proceed to a nearby lake. Then, Gurnemanz tells the gathered knights and squires the story of how a beautiful woman betrayed Amfortas to the sorcerer Klingsor, who stole the sacred spear from Amfortas and inflicted a wound that can only be healed by a pure fool. Klingsor had been denied membership by the Grail knights and swore to capture the Grail for himself. The knights and squires are interrupted by a swan shot by an arrow dropping from the sky. A young boy, Parsifal, is brought to the knights and admits to shooting the swan. Gurnemanz admonishes Parsifal for this action, and Parsifal breaks his bow in shame. When asked where he comes from, Parsifal can only answer, "I do not know." The other knights leave to attend to Amfortas and Kundry explains that Parsifal's father died in battle and that Parsifal's mother, who raised him in the wilderness, is now dead as well. Kundry retires back into the brush and Gurnemanz leads Parsifal to the Grail Sanctuary in hopes that he is the pure fool arriving to save Amfortas.

In the Grail Sanctuary, the knights assemble at their tables, with Amfortas at their head. Squires bring in the Holy Grail, and the knights proceed with a Holy Communion ceremony. Amfortas, tormented by the pain of his endless wound and wishing to die instead, does not want to perform his duty in uncovering the Grail. Hearing the voice of



**B-TOWN'S
PIZZA
DELIVERY
HERO
SINCE 1982**



ALL ACCESS

TO XCLUSIVE DEALS YEAR-ROUND

Sign up at pizzaxbloomington.com/order to get

\$3 OFF YOUR NEXT PIZZA

<p>1. Select your location</p> 	<p>2. Click the "register" button</p> <p>Register & Get \$3 Off Any 14" or 16" Pizza</p>	<p>3. Fill out & Verify email</p> 
---	---	--

Everyday Deals

No coupon required!

BIG X BARGAIN \$15.99



LG. 1-TOPPING PIZZA / 2 DRINKS / BREADSTIX
SMALL: \$13.49 / X-LARGE: \$18.49

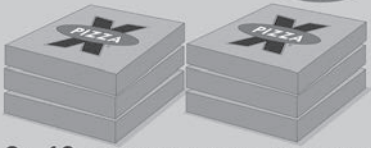
LITTLE 500® DEAL \$5.55

"Little 500" is a registered trademark of the Indianapolis Motor Speedway



BREADSTIX / 2 DIPPING SAUCES / 22 OZ. SODA

VOLUME DEAL \$9.99 each



2 to 10 LG. 1-TOPPING PIZZAS / \$9.99 EACH
XL 1-TOPPING PIZZAS / \$11.99 EACH

Craving an easier way to order?
Download our **FREE** app or visit
pizzaxbloomington.com/order



his aged father, Titurel, he painfully uncovers the Grail, and a blinding ray of light shines on it. Amfortas does not partake in the meal, and his wound opens again. Parsifal stands unfazed by this proceeding, and Gurnemanz angrily expels him from the Sanctuary.

45-minute Intermission

Act II

Klingsor, in his castle, summons Kundry to his chambers and commands her to seduce Parsifal, who is drawing near the castle to reclaim the sacred spear. Kundry is reluctant but is compelled by Klingsor's magic.

The scene changes to a beautiful garden, where Parsifal has just arrived. Flower maidens appear in the garden and try to seduce Parsifal, who rejects their advances. Kundry appears, sending the flower maidens away, and calls Parsifal by name for the first time. Kundry tells Parsifal of his mother's anguish at his departure and of her death. Parsifal is distraught at hearing Kundry's tale, and Kundry gives Parsifal a deep kiss, saying it is his mother's final gift to him. Parsifal recoils and feels the pain of Amfortas's wound, remembering his mission. Trying to lure Parsifal through pity, Kundry asks for solace and a release from her curse, attained as she mocked Christ on the cross. Parsifal again denies her and offers love and redemption only if he is able to complete his mission. They arrive at the castle wall and Klingsor hurls the spear at Parsifal to deal his final blow. Instead, the spear is suspended in midair and Parsifal seizes it. Making the sign of the cross, Parsifal banishes Klingsor's magic, and the castle crumbles to the ground.



MELANIE MASHNER
Masters student in Harp Performance
IU Jacobs School of Music

EXCEPTIONAL PERFORMANCES. EXCEPTIONAL LIVING.

Proud to be an IU Jacobs School
of Music dress rehearsal recital site.

MEADOWOOD



2455 Tamarack Trail
Bloomington, IN 47408

812-336-7060

www.MeadowoodRetirement.com

INDEPENDENT LIVING • OUTPATIENT REHAB
SKILLED NURSING • SHORT STAYS • REHAB TO HOME

©2019 Five Star Senior Living





COVERING THE ARTS

- INDIANA UNIVERSITY -

Stay up to date on Arts and Entertainment news from IU and the Bloomington community by reading the Indiana Daily Student. The IDS is available for free at more than 350 locations on campus and around town. Get your news at idsnews.com or follow us on social media.



idsnews.com

20-minute Intermission

Act III

Gurnemanz, now greatly aged and dressed as a hermit, steps out of a simple hut in the domain of the Grail. He finds Kundry in a thicket and awakens her to find her strangely different than before. Parsifal enters, dressed in full armor and carrying the spear. Gurnemanz does not recognize him and questions his arrival, explaining that it is Good Friday morning and that no one should enter this sacred ground with the arms of war. As Parsifal takes off his helmet, Gurnemanz and Kundry recognize him and his sacred spear. Parsifal tells them that he had been wandering for many years, fighting battles but never using the sacred spear, but now he has found his way to reunite the spear and the Grail. Gurnemanz explains that Amfortas, now deeply suffering, refuses to serve the Grail. Gurnemanz and Kundry wash Parsifal's feet and head in the nearby spring then anoint him with oil. Parsifal, now refreshed, baptizes Kundry. Gurnemanz leads Parsifal and Kundry to the Grail Sanctuary as tolling bells announce Titurel's funeral.

At the Grail Sanctuary, two processions arrive: one carrying Amfortas and the Grail, and the other Titurel's coffin. Amfortas again refuses to uncover the Grail, wanting instead to end his anguish in death. Parsifal arrives and touches the spear to Amfortas's side, absolving Amfortas of his sins and healing his wound. Parsifal ascends to the altar and uncovers the Grail as a dove descends over Parsifal's head. Amfortas, Gurnemanz, and the knights kneel before Parsifal and the Grail, and Kundry sinks lifeless to the ground. Parsifal is the new king of the redeemed Grail knights.



70
YEARS ANNIVERSARY

**Celebrating
the Arts in our
Community
for 70 years.**

ISU Insurance Services
The MayAgency
EST. 1949

1327 N. Walnut St. | (812) 334-2400 | MayAgency.com

Bursar billing available!



P. TCHAIKOVSKY

THE NUTCRACKER

DEC. 5, 6, 7 | 7:30 PM

DEC. 7, 8 | 2 PM

Musical Arts Center



INDIANA UNIVERSITY JACOBS SCHOOL OF MUSIC
OPERA AND BALLET THEATER



Purchase tickets at

812-855-7433

operaballet.indiana.edu

Program Notes

by Matthew Van Vleet

Ph.D. Musicology Candidate

Richard Wagner's *Parsifal* premiered on July 26, 1882, at the Bayreuth Festspielhaus, the theater specially built to house his operas. *Parsifal* was Wagner's thirteenth and final opera, as the aging composer would pass away six months after it opened. Although most of the work on the opera—or as Wagner called it, *Bühnenweihfestspiel* or “festival consecration of the stage”—was completed after 1877, its origins lie much earlier in Wagner's career. *Parsifal* is based on Wolfram von Eschenbach's thirteenth-century Grail epic *Parzival*, a work that Wagner read in 1845. Wagner twice began work on an opera based on *Parzival*, producing a prose sketch in 1857 (which does not survive) and a complete prose draft in 1865. As Wagner worked out the plot of *Parsifal*, he also developed his artistic ideal of *Gesamtkunstwerk* (total artwork), unifying musical, dramatic, and visual arts to create a new kind of experience. These ideas shape *Parsifal* from the way it is constructed to the thematic content of the opera.

While there is no shortage of Wagner prose detailing his artistic philosophy, perhaps its most concise expression comes from the text of *Parsifal*. Near the midpoint of Act 1, the elder Grail Knight Gurnemanz addresses Parsifal, the pure fool: “You see, my son, that here time turns to space.” This line is delivered as Gurnemanz leads Parsifal to the Grail Sanctuary and is accompanied by an elaborate scene transformation. The idea of “time turns to space” metaphorically captures a key aspect of Wagner's *Gesamtkunstwerk* concept. Drama and music are defined by their unfolding through time, and by uniting them, Wagner attempts to create a new kind of aesthetic space for the contemplation of philosophical ideas.

While this line is a useful way of understanding Wagner's aesthetic, it is more directly important within the drama of the scene itself. Gurnemanz's statement, “here time turns to space,” lays out the essential mystery of the Grail Sanctuary and the knights who protect it. The forest where they reside and the sanctuary they protect are sacred and otherworldly, and their order is ancient, even timeless. The knights are sustained through the Grail but for Amfortas, their king, this means eternal suffering from his unhealing wound and tormenting reminders of his sin in losing the Holy Spear. There are obvious religious implications to the Grail Sanctuary and Holy Communion enacted in this scene, and Wagner approaches them through ruminations on the nature of time and space.

The concept “time turns to space” can also be extended to how Wagner's score for *Parsifal* supports and complements the drama. But first, an essential consideration Wagner made in composing *Parsifal* was the specific venue the work would be performed in: the Bayreuth Festspielhaus. It was the only opera Wagner composed exclusively for the Festspielhaus, which was completed in 1876. The unique design elements of the Festspielhaus, notably the completely hidden orchestra pit, serve to heighten the effect of the drama by eliminating every possible distraction from what is happening on stage. This facilitates a total immersion into the opera's dramatic space, and Wagner's score capitalizes on this with long, slow builds and intensely sustained emotional passages.

Even when *Parsifal* is performed on stages other than Bayreuth, Wagner's goal of a fully immersive aesthetic experience is still apparent in the music. *Parsifal* extends the musical form Wagner developed in his other mature operas in which there are no distinct arias, recitatives, or other numbers. The music flows continuously through the entirety of each

act, sustaining the immersion in the drama. The idea is that there is nothing to remind the audience of the artifice of the stage, no formulaic arias, no applause, and no scene breaks. It is even traditional at Bayreuth performances to abstain from applause after the first act.

Another technique Wagner employs to immerse the audience in the opera space is the use of leitmotifs. A familiar Wagnerian device, leitmotifs are musical themes representing characters, objects, or concepts. This helps unite important thematic elements across the duration of the opera. Compared to earlier Wagner operas, the leitmotifs in *Parsifal* are often more thematic or conceptual than concrete. One important leitmotif to follow is the Grail motif, which quotes the distinctively rising, hymn-like *Dresden Amen*. Many of the leitmotifs in *Parsifal* are based on material introduced in the Act 1 prelude. Right away, the prelude draws the audience into the sonic world of *Parsifal*, and the motivic connections spanning the entire score are designed to keep them immersed in its musical space.

While each element of *Parsifal*—the music, the poetry, the sets and costuming—works toward the same artistic goal, ultimately, it is the combination of these elements that truly expresses Wagner's ideal. The vision of *Gesamkunstwerk* is so fundamental to *Parsifal* that Wagner stipulated that no other theater but the Festspielhaus should ever perform the work. After he died, Wagner's widow, Cosima, preserved that legacy. Until 1914, the only place to see an authorized performance of *Parsifal* was Bayreuth, and even after this monopoly ended, Bayreuth productions preserved Wagner's original stage designs for decades. *Parsifal* performances became something like the Act 1 Grail Sanctuary: a ritualized space seemingly frozen in time. While *Parsifal* is performed all over the world today in creative new productions, part of its legacy will always be entrenched in Wagner's artistic ideals.

Bloomington's Best Addresses

JeffSells.com



Realtor

Jeff Franklin

812-360-5333

franklin@homefinder.org



Artistic Staff

Conductor



Arthur Fagen has been professor of orchestral conducting at the Jacobs School of Music since 2008. Additionally, he has been music director of the Atlanta Opera since 2010. He has conducted opera productions at the world's most prestigious opera houses and music festivals. From 1998 to 2001, he was invited regularly as guest conductor at the Vienna State Opera, in addition to performances at the Metropolitan Opera, Staatsoper Berlin Deutsche Oper Berlin, Munich State Opera, and many more. On the concert podium, he has appeared with numerous internationally known orchestras. Fagen has an opera repertory of more than 75 works. He has served as principal conductor in Kassel and Brunswick, as chief conductor of the Flanders Opera of Antwerp and Ghent, as music director of the Queens Symphony Orchestra, and as a member of the conducting staff of Lyric Opera of Chicago. From 2002 to 2007, he was music director of the Dortmund Philharmonic Orchestra and the Dortmund Opera. He and the Dortmund Philharmonic were invited to the Concertgebouw in Amsterdam, the Palais de Beaux Arts in Brussels, and to Salzburg, Beijing, and Shanghai. Fagen conducted a new production of *Turandot* at the Atlanta Opera in 2007, opening the season and inaugurating the new opera house, the Cobb Energy Performing Arts Center. He was a regular guest conductor of the Munich Radio Orchestra and guest conducted the Orchestre de la Suisse Romande, Deutsche Kammerphilharmonie, Schleswig-Holstein Festival, and many others. He was first-prize winner of the Baltimore Symphony Orchestra Conductors Competition as well as a prizewinner of the Gino Marinuzzi International Conductors' Competition in Italy. Fagen has recorded for BMG, Bayerischer Rundfunk, SFB, and WDR Cologne. He records regularly for Naxos, for which he has completed the six symphonies of Bohuslav Martinů. His Naxos recording of Martinů's piano concertos was awarded an Editor's Choice award in the March 2010 issue of *Gramophone* magazine. This season, Fagen will be recording with the London Symphony Orchestra, London Philharmonic, and Philharmonia Orchestra.

Stage Director



Chris Alexander, the son of a soprano and a baritone who sang professionally in the United States in the 1950s, started his career as an actor and director in Germany. Founder of the Bremer Shakespeare Company, he directed and acted in many Shakespeare dramas, which he also translated into German. He directed more than 60 plays in Germany and Switzerland. Alexander's European opera productions include Rossini's *Viaggio a Reims*, Wagner's *Tannhäuser*, and Verdi's *Otello* in Mannheim, Rossini's *Cenerentola* in Munich, *Ballo in Maschera* in Wiesbaden, Battistelli's *Prova d'orchestra* in Düsseldorf, Bizet's *Carmen* and Tchaikovsky's *Queen of Spades* in Bern, Wagner's *Fliegende Holländer* in Linz, and Puccini's *La Bohème* in Hannover. He made his U.S. debut at Seattle Opera directing Mussorgsky's *Boris Godunov* in 2000. He returned for Verdi's *Falstaff*, Beethoven's *Fidelio*, and Richard Strauss's *Ariadne auf Naxos*, a production that earned him the company's Artist-of-the-Year award. He won this award again for *Les Contes d'Hoffmann* and *Porgy and Bess*. He directed Puccini's *Turandot*, Tchaikovsky's *Maid of Orleans*, and Rossini's *L'Italiana in Algeri* in San Francisco and has worked as a

director for the opera companies in Dallas, Washington, Vancouver, Montreal, Cincinnati, and Atlanta. *Parsifal* is Alexander's fourth production for IU Jacobs School of Music Opera Theater, after *Les Contes d'Hoffmann*, *Le Nozze di Figaro*, and *Peter Grimes*.

Set Designer



S. Katy Tucker is a New-York based video and projection designer. She began her career as a painter and video installation artist, exhibiting her work at a variety of galleries, such as the Corcoran Museum, Dupont Underground, The Dillon Gallery, and Artist Space in New York City. She has collaborated with musicians such as Paul McCartney, David Robertson and the St. Louis Symphony, the Sydney Symphony, Paola Prestini, Helga Davis, Amanda Gookin, and Jeffrey Ziegler. Tucker's work in theater and opera has been seen around the world, including Broadway, Off-Broadway, the Metropolitan Opera, Sydney Opera House, Dutch National Opera, Carnegie Hall, New York City Ballet, Kennedy Center, BAM, and Park Avenue Armory, among others. Recent productions include Dmitri Tcherniakov's *Prince Igor* at the Dutch National Opera and Metropolitan Opera, *The Ring Cycle* with Francesca Zambello at San Francisco Opera, *Candide*, *Iron & Coal*, and *Lovestate* with Kevin Newbury, *The Flying Dutchman* and *Florencia en el Amazonas* at Houston Grand Opera, and *West Side Story* at the Kennedy Center with Francesca Zambello. Upcoming productions include set and video design for *Hansel and Gretel* at the Canadian Opera Company, *Don Giovanni* and *Samson and Delilah* at Washington National Opera, and the world premiere of *Castor and Patience* with Kevin Newbury at Cincinnati Opera.

**griffin
realty**
735 s. college
bloomington
812.323.7232
leanong.com

Ψ PAUL H. O'NEILL
SCHOOL OF PUBLIC AND ENVIRONMENTAL AFFAIRS

**Advocate
for the arts**

Develop the behind-the-scenes skills you need to lead an arts organization in just three semesters with a Master of Arts in Arts Administration.

oneill.indiana.edu

Costume Designer



Linda Pisano designs for theater, dance, musical theater, ballet, and opera throughout the United States; her ballet designs have toured the U.K. and Canada. An award-winning designer, Pisano is the only U.S. costume designer to have her work selected for the World Stage Design Exhibition in Taipei 2017. Her work will be featured representing the United States for the second time at the Quadrennial World Exhibition in Prague in June. She is a four-time winner of the National Stage Expo for performance design and a four-time recipient of the Peggy Ezekiel Award for Excellence in Design. Her work was selected from top designers in the United States to be featured in a world design exhibition with the Bakhrushin Museum in Moscow and the China Institute of Stage Design in Beijing. Pisano currently serves as chair of the Department of Theatre, Drama, and Contemporary Dance at IU and producer of Indiana University Summer Theatre. As professor of costume design, she also directs the Theatre & Drama study abroad program in London and is a co-author of the recent book *The Art and Practice of Costume Design*. Some of her work with Jacobs includes *Giulio Cesare*, *West Side Story*, *L'Étoile*, *Akhmaten*, *Madama Butterfly*, *Vincent*, and *La Traviata*. She also designs with Opera San Antonio, BalletMet, Utah Shakespeare Festival, Utah Festival Opera, and San Diego Opera, and is designing *Candide* at Des Moines Metro Opera in June. You can see her work on the upcoming production of IU's *Parsifal* and Indiana Repertory Theatre's *Christmas Carol*. She is a member of the United Scenic Artists, Local 829.

Lighting Designer



Todd Hensley returns to the Jacobs School of Music after lighting *Bernstein's Mass*, *Florencia en el Amazonas*, *The Tale of Lady Thi Kinh*, *Akhmaten*, *Candide*, and *La Rondine*. Other opera designs include *Un Ballo in Maschera*, *Don Giovanni*, and *Cavalleria/Pagliacci* for Florida Grand Opera, *Carousel* and *From the Towers of the Moon* for Minnesota Opera, and productions for Baltimore Opera, Cleveland Opera, Michigan Opera Theatre, The Skylight, Wolf Trap Opera, and Chicago Opera Theater. Other design work includes the Noel Coward musical *A Marvelous Party*, with engagements in six cities; Eartha Kitt in *Lady Day* at Emerson's Bar and Grill; and *The Hobbit* for the Children's Theatre Company of Minneapolis. Hensley is a partner with Schuler Shook Theatre Planners, with projects including Chicago's Jay Pritzker Pavilion in Millennium Park, the Lookingglass Theatre, and major opera house renovations in Seattle, Chicago, and Sarasota.

Fight Choreographer



Leraldo Anzaldúa is a Houston, Texas-based actor and fight director with the Society of American Fight Directors (SAFD) and choreographer with Stage Directors and Choreographers. Venues he has worked with include Indiana Repertory Theatre, Colorado Shakespeare Festival, Houston Grand Opera, Alley Theatre, Cardinal Stage, and Bloomington Playwrights Project. He is a voiceover talent with Sentai Filmworks, with titles airing on Netflix, Hulu, and Cartoon Network/Adult Swim. He has been a motion-capture performer and fight director with Sony Pictures and Sola Digital in

Tokyo, Japan. Anzaldúa has been a motion-capture fight director and talent for video games in the U.S and Uppsala, Sweden. He has taught movement, stage combat, acting, and Shakespeare at the University of North Dakota, Rice University, University of Houston, and Alabama Shakespeare Festival. He earned a master's degree in acting from the University of Houston. He is an SAFD mentor and a member of the SAFD Diversity Committee, as well as assistant professor of movement and stage combat at the IU Department of Theatre, Drama, and Contemporary Dance.

Chorus Master



Walter Huff is professor of choral conducting and faculty director of opera choruses at the Jacobs School of Music. He served as chorus master for the Atlanta Opera for more than two decades, leading the renowned ensemble in more than 125 productions, with critical acclaim in the United States and abroad. He earned a Bachelor of Music degree from the Oberlin Conservatory and a Master of Music degree from Peabody Conservatory (Johns Hopkins). He studied piano with Sarah Martin, Peter Takács, and Lillian Freundlich, and voice with Flore Wend. After serving as a fellow at Tanglewood Music Center, he received Tanglewood's C. D. Jackson Master Award for Excellence. Huff served as coach with the Peabody Opera Theatre and Washington Opera, and has been musical director for The Atlanta Opera Studio, Georgia State University Opera, and Actor's Express (Atlanta). He also has worked as chorus master with San Diego Opera. He served on the faculty at Georgia State University for four years as assistant professor, guest lecturer, and conductor for the Georgia State University Choral Society. He has served as chorus master for IU Jacobs School of Music Opera and Ballet Theater productions of *The Merry Widow*, *Akhnaten*, *Lady Thi Kinh*, *H.M.S. Pinafore*, *La Traviata*, *The Italian Girl in Algiers*, *La Bohème*, *The Last Savage*, *South Pacific*, *Die Zauberflöte*, *The Barber of Seville*, *Dead Man Walking*, *Die Fledermaus*, *Carmen*, *Oklahoma!*, *The Daughter of the Regiment*, *Florencia en el Amazonas*, *Madama Butterfly*, *Peter Grimes*, *The Music Man*, *Don Giovanni*, *L'Étoile*, *It's a Wonderful Life*, *Lucia di Lammermoor*, *West Side Story*, *The (R)evolution of Steve Jobs*, *Dialogues of the Carmelites*, *The Elixir of Love*, Bernstein's *Mass*, and *Le Nozze di Figaro*. For four years, Huff has served as choral instructor and conductor for the Jacobs School's Sacred Music Intensive. He has conducted the Jacobs Summer Music series productions of Arthur Honegger's *King David* and Stephen Paulus's *The Three Hermits*. Huff also maintains a busy vocal coaching studio in Atlanta, and last summer, he returned for a second year to Ravinia Festival's Steans Music Institute.

Children's Chorus Master



Brent Gault is professor of music education at the Indiana University Jacobs School of Music. He has taught elementary and early childhood music courses in Texas, Wisconsin, Connecticut, Pennsylvania, and Indiana. He specializes in elementary general music education, early childhood music education, and Kodály-inspired pedagogy. Gault also has training in both the Orff and Dalcroze approaches to music education. He has presented sessions and research at conferences of the American Orff-Schulwerk Association, Dalcroze Society of America, International Kodály Society, International Society for Music Education, Organization of American Kodály Educators, and NAFME:

The National Association for Music Education. In addition, he has served as a presenter and guest lecturer for colleges and music education organizations in the United States, Canada, China, and Ireland. Articles by Gault have been published in various music education periodicals, including the *Bulletin of the Council for Research in Music Education*, *Journal of Research in Music Education*, *Music Educators Journal*, *General Music Today*, *Kodály Envoy*, *Orff Echo*, and *American Dalcroze Journal*. He is the co-editor (with Carlos Abril) of *Teaching General Music* (2016, Oxford University Press) and author of *Listen Up! Fostering Musicianship Through Active Listening* (2016, Oxford University Press). In addition to his duties with the Jacobs School Music Education Department, Gault serves as the program director for the Indiana University Children's Choir, where he conducts the Allegro Choir. He is a past president of the Organization of American Kodály Educators.

German Diction Coach



Conductor **Walter Althammer** completed his studies with distinction at the academy of music in Munich with Hermann Michael. Althammer participated in master classes with Leonard Bernstein, Sergiu Celibidache, and Kurt Masur. As assistant, he worked regularly with Hartmut Haenchen, Bernard Haitink, Riccardo Chailly, and Kent Nagano. Althammer's engagements as coach and conductor have included the Bayerische Staatsoper, Stadttheater Dortmund, and Städtische Bühnen Münster. From 1992 until 1996, he was the chief conductor and music director of the Hoofdstad Operette Amsterdam. From 1997 until 2000, he was chief conductor and artistic advisor of the International Danube Opera, an opera company with which he performed operas by Bizet, Verdi, and Puccini. In 2001, he gave his debut in Italy, with the opera *Il Matrimonio Segreto*; in 2003, his debut in Los Angeles, with *Orfeo ed Euridice* by C. W. Gluck; in 2010, his debut in Toulouse, France, with *Elektra* by Richard Strauss; and, in 2014, his debut in Madrid, Spain, with *Lohengrin* by Richard Wagner. From October 2013 until October 2015, he was teaching as professor in the position of music director of the singing department at the Hochschule für Musik und Darstellende Kunst Frankfurt am Main. Althammer has been engaged as a guest conductor at numerous opera houses, including Bayerischen Staatsoper München, Opernhaus Bonn, Muziektheater Amsterdam, Stadttheater St. Gallen, Semperoper Dresden, Komische Oper Berlin, and Deutsche Oper am Rhein Düsseldorf. He has conducted symphonic concerts with Limburgs Symphonie Orkest, Noord Nederlands Orkest, and Nürnberger Symphoniker. Apart from directing the Stravinsky Ensemble, which he founded in 1996, he also regularly conducts concerts and produces CDs for contemporary music with the ASKO Ensemble and the Barton Workshop.

Cast

Amfortas



Mark Delavan, a singer of “incisive vocal power and fierce theatrical acuity,” is sought after throughout the United States and Europe for the most demanding roles in his operatic repertoire. He regularly appears in the title roles of *Der Fliegende Holländer*, *Falstaff*, and *Rigoletto*, and as Iago in *Otello*, Scarpia in *Tosca*, Jochanaan in *Salome*, and Amonasro in *Aida*. In addition, as a strong character actor on stages throughout the country, he has proved himself a crossover artist of immense skill. Most recently, Delavan starred as Phil Arkin in *Milk and Honey* with York Theatre Company, to critical acclaim. Of his performance, critics hailed his “rich, resonant voice” with “impressively clear high notes.” At the Metropolitan Opera, Delavan took his interpretation of Wotan in cycles of *Der Ring des Nibelungen* under Fabio Luisi to critical acclaim. He has also performed at the esteemed house the title roles of *Simon Boccanegra* and *Nabucco*, and has appeared as Scarpia in *Tosca*, Amonasro in *Aida*, Tomsky in *Pique Dame*, Alfio in *Cavalleria Rusticana*, Carlo in *La Forza del Destino*, Gianciotto in Zandonai’s *Francesca da Rimini*, and Gerard in a major revival of *Andrea Chénier*. This season, Delavan also performs the role of Michele/Alfio in *Tabbaro/Cavalleria Rusticana* with Maryland Lyric Opera, Jochanaan in *Salome* with the Dallas Symphony, and Tonio in *I Pagliacci* with Michigan Opera Theater, and joins the Metropolitan Opera for its production of *Tosca*. Last season, he returned to the Met for its productions of *La Fanciulla del West*, *Aida*, and *Falstaff*, performed in a concert performance of *La Fanciulla del West* as Jack Rance in the Inaugural Season of Maryland Lyric Opera, and reprised the title role of *Falstaff* with Dallas Opera. He will return to Dallas Opera in 2020.

Amfortas (cover)



Hailed for his “rich and deep sound, robust and regal” regarding his recent Carnegie Hall debut, **John Robert Green** is a versatile baritone with an exceptionally beautiful timbre. He returned to Teatro Grattacielo in New York City this fall with his menacing performance of Bardo in the American premiere of Cilea’s *Gloria*, his second American premiere with Teatro Grattacielo in as many years. Last year, he was praised for his endearing performance as Caleb Plummer in Zandonai’s *Il Grillo del Focolare*. Green recently had great success with his Wagnerian debut as Gunther in *Götterdämmerung* with LidalNorth. He previously enthralled Norwegian audiences with his Tarquinius in Britten’s *The Rape of Lucretia* and his enchanting Peter in Humperdinck’s *Hansel and Gretel*. He reprised the role of Peter with the Savannah Voice Festival last summer. He has been lauded for his performances as Guglielmo in *Così fan tutte*, Marcello in *La Bohème*, Dr. Rappaccini in *La Hija de Rappaccini*, Count Almaviva in *Le Nozze di Figaro*, and the title role in *Don Giovanni*. He received the Opera Performance of the Year Award from Illinois Opera Theatre for his performance of Germont in *La Traviata*. Earlier this year, Green received accolades for his performance as the baritone soloist in Verdi’s *Messa da Requiem* with the Helena Symphony. He was equally praised for his recent performance as the bass soloist in Rossini’s *Stabat Mater* with Hunter College. For his performance with Distinguished Concerts International New York at Carnegie Hall, he sang with “an infectious energy, and imbued with such pure emotion, that a number of tissues were

spotted being pulled from pockets and purses.” He has appeared as a featured soloist with the Baroque Artists of Champaign-Urbana in performances of Bach’s *B-Minor Mass*, *Christmas Oratorio*, and *St. John Passion*, as well as Handel’s *Messiah* and as the title character in Handel’s *Saul*.

Titurel, Gurnemanz (cover)



Dominic Barberi graduated from the Royal Conservatoire of Scotland with an M.Mus. Perf. (Distinction) under Stephen Robertson. Barberi was a member of the Berlin Staatsoper Unter den Linden Opera Studio through the Liz Mohn Foundation from 2015 to 2018, where his roles included Pietro (*Simon Boccanegra*) and Barone Douphol (*La Traviata*) under the baton of Daniel Barenboim, Tom (*Un Ballo in Maschera*),

Sarastro (*Die Zauberflöte*), and Colline (*La Bohème*). In 2017, he represented England in the BBC Cardiff Singer of the World competition and was a finalist in the International Vocal Competition’s Hertogenbosch, receiving the Handel Award. He was invited to participate in the 2019 Operalia Competition in Prague and the Wigmore Hall Song Competition. Highlights include Sarastro (*Die Zauberflöte*) and a recital at the Berlin Staatsoper, as well as successful role debuts as Alvisè Badoero (Ponchielli’s *La Gioconda*, Tiroler Landestheater, Innsbruck), Publio (Mozart’s *La Clemenza di Tito*), and Zuniga (Bizet’s *Carmen*, Staatstheater Braunschweig). In September 2018, he joined the ensemble of the Mannheim National Theatre, with roles including Alidoro (*La Cenerentola*), Titurel (*Parsifal*), Angelotti (*Tosca*), and his debut as Bottom in a new production of *A Midsummer Night’s Dream* in Montpellier, directed by Ted Huffman. Barberi has appeared as a guest soloist throughout Europe in productions including Handel’s *Messiah*, Bach’s *St John Passion* and *St Matthew Passion*, Haydn’s *Die Schöpfung*, Mozart’s Requiem, Dvořák’s *Stabat Mater*, Mendelssohn’s *Elijah*, and a world premiere of *Luther Oratorio* at the Berlin Philharmonic. Upcoming highlights include the title role in *Le Nozze di Figaro* in Mannheim, his debut at La Scala in a new production of *Salome*, and returning to France as Colatinus in Britten’s *The Rape of Lucretia*.

Titurel (cover)



Sonjin “John” Kim, a South Korean bass, is pursuing a Performer Diploma in Solo Performance at the Jacobs School of Music under the tutelage of Carol Vaness. He is a winner of the Joshi Fellowship, one of the school’s most prestigious awards. He is a graduate of Seoul National University, where he was granted full scholarship under the tutelage of Yonghoon Lee. There, Kim was highly celebrated for his roles as Il

Commendatore in *Don Giovanni* and Sarastro in *Die Zauberflöte*, having performed them at both Seoul National University and the Seoul Metropolitan Opera House. This fall, he performed the title role in *Le Nozze di Figaro* with IU Jacobs School of Music Opera Theater and has performed as bass soloist for Beethoven’s Symphony No. 9 with the Louisville Orchestra. Kim’s choral experience includes works such as Mahler’s Symphony No. 2, Britten’s *War Requiem*, and Bernstein’s *Mass*.

Parsifal



Canadian tenor **Chris Lysack** brings a vast and unorthodox skillset to his craft. Having received his formal training at Indiana University in piano (D.M.'09) and French literature (Ph.D.'14) before completing his vocal studies at Manhattan School of Music, he is uniquely positioned to approach the most challenging repertoire with intellectual rigor and refined musicianship of the highest caliber. For nearly 10 years, the “intrepid, individual artist” (*Opera Now*) has performed as a leading tenor throughout Europe, including at the Hamburg State Opera, Salzburg State Theater, Linz State Theater, Nationaltheater Mannheim, Stadttheater Bern, Deutsches Nationaltheater Weimar, Opera på Skåret, and the Theater Bremen, site of his “sensational debut” (*Das Opernglas*) in the Wagnerian repertoire, as Stolzing in *Die Meistersinger von Nürnberg* in 2014. Lysack has performed a broad cross-section of the repertoire, ranging from the title roles in *Lohengrin*, *Les Contes d'Hoffmann*, and *Peter Grimes*, to such favorites as Florestan (*Fidelio*) and Cavaradossi (*Tosca*), and to lesser-known modern works, including York Höller's *Der Meister und Margarita* and Brett Dean's *Bliss*. The versatile tenor also has a particular interest in Czech music, having achieved acclaim as the Prince (*Rusalka*) and Laca Klemeň (*Jenůfka*) at the Theater Aachen, as well as in Janáček's masterpiece *Zápisník zmlělého*. Lysack was twice awarded grants from the Canada Council for the Arts for language study and role preparation in the Czech Republic. The sometime pianist made his German debut at the Laeiszhalle in Hamburg in 2015, has appeared as a concerto soloist with the Aachen Symphony Orchestra and Bremen Philharmonic, and his piano discography includes recordings on the Capstone and Centaur labels. He began his singing career with young-artist engagements at Chautauqua Opera and Glimmerglass Opera in New York before joining the International Opera Studio, and later the ensemble, of the Hamburg State Opera. While at the IU Jacobs School of Music, he studied voice with Andreas Poulimenos and piano with André Watts.

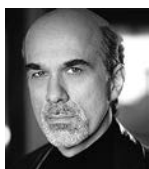
Parsifal (cover)



Kevin Ray is praised by *Opera News* for his “commendable style” and abilities with “subtle coloristic nuance.” This season, he returns to the Metropolitan Opera for its production of *Simon Boccanegra*. Last season, he made his Met debut as the Messenger in *Aida* and also joined the company for its productions of *La fanciulla del West* and *Das Rheingold*. He recently sang his first performances of King Charles VII in Tchaikovsky's *The Maid of Orleans* with Odyssey Opera, the Prince in *Rusalka* with Arizona Opera, Erik in *Der fliegende Holländer* with Estonian National Opera, and Bacchus in *Ariadne auf Naxos* with Berkshire Opera Festival. He recently returned to Houston Grand Opera to sing performances of the company's new commission of Iain Bell's one-man opera, *A Christmas Carol*, in addition to returning to the company for Roderigo in *Otello*, Beadle Bamford in *Sweeney Todd*, and both the First Armed Man and Second Priest in *Die Zauberflöte*. He is an alumnus of the Houston Grand Opera Studio. Ray's other recent engagements include his first performances of the title role in *Peter Grimes* with Chautauqua Opera; Bacchus in *Ariadne auf Naxos* presented by his alma mater, the Curtis Institute of Music, in association with Opera Philadelphia and the Kimmel Center for the Performing Arts; and Don José in *Carmen* with Wolf Trap Opera

and the Lyrique-en-Mer/Festival de Belle-Île. While a Santa Fe apprentice artist, he created the role of the Second Clubman in the world premiere of Moravec's *The Letter*. Also with the company, he sang the role of the Poet in Menotti's *The Last Savage*, covered the Drum Major in *Wozzeck*, and performed scenes of the title role of *Idomeneo*. He is a 2016 second prizewinner in the Wagner division of the Gerda Liszner Foundation's International Vocal Competition and a 2015 winner of the William Matheus Sullivan Musical Foundation Award.

Klingsor



Described by *Das Opernglas* as “a strong, rich and warm-colored voice with assured style,” **Mark Schnaible** also joins Arizona Opera as the Musiklehrer in *Ariadne auf Naxos* and sings performances of the title role in *Bluebeard's Castle* with the Columbus Symphony in the 2019-20 season. Last season, he joined Arizona Opera as Bartolo in *Le Nozze di Figaro*. He recently returned to Oper Leipzig for reprise performances of Pere Joseph in the acclaimed production of Gounod's *Der Rebell des Königs (Cinq Mars)* and Méphistophélès in *Faust*, and to the Metropolitan Opera for its new productions of *Guillaume Tell* and *Lulu*. He also performed at Palm Beach Opera as the Musiklehrer in *Ariadne auf Naxos* and the Police Sergeant in *The Pirates of Penzance*. Schnaible's other recent performances include Friedrich in *Das Liebesverbot* and Méphistophélès in *Faust* with the Teatro Comunale Bolzano; Orest in Willy Decker's production of *Elektra* with Polish National Opera; Der Wanderer in *Siegfried* with Kent Nagano conducting, and the Four Villains in *Les Contes d'Hoffmann* in a production directed by Nicholas Joel with Den Nye Opera. Others include Jochanaan in *Salome* with Edmonton Opera and Cedar Rapids Opera Theater; Escamillo in *Carmen* with New Orleans Opera and the Saarbrücken Radio Symphony Orchestra; Nick Shadow in *The Rake's Progress*, Pizarro in *Fidelio*, Ferrando in *Il Trovatore*, and the title role in *Giulio Cesare* with Utah Opera; Friedrich in the North American stage premiere of *Das Liebesverbot*, and the Count in *Le Nozze di Figaro* with Glimmerglass Opera. Additional appearances include Biterolf in Robert Carsen's production of *Tannhäuser* conducted by Seiji Ozawa at Tokyo Opera Nomori; the title role in *Sweeney Todd* and Scarpia in *Tosca* with Portland Opera, Dayton Opera, and Shreveport Opera; and Méphistofélès in *Faust* with Shreveport Opera and El Paso Opera.

Klingsor (cover)



Mitch Gindlesperger, bass-baritone, is a regular member of the Atlanta Opera Chorus and has performed comprimario roles with the Atlanta Opera including Antonio in *Le Nozze di Figaro*, the Second Philistine in *Samson et Dalilah*, and the Old Gypsy in *Il Trovatore*. Gindlesperger also has prior experience with the Atlanta Opera Studio, presenting master classes and opera workshops for high schools across the state of Georgia.

He earned his vocal performance degree from Clayton College and State University. Other roles he has performed include Figaro in the Atlanta Concert Opera's production of *Le Nozze di Figaro*, Aeneas in *Dido and Aeneas*, Adonis in *Venus and Adonis*, Lancelot du Lac in *Camelot*, and the Mother in the Atlanta Symphony Orchestra's performance of Kurt Weill's *The Seven Deadly Sins*.

Gurnemanz



Lauded for his portrayal of Baron Ochs in *Der Rosenkavalier* that he “dealt in revelations,” the *Financial Times* further praised Icelandic bass **Kristinn Sigmundsson**, “His tone dark and his dynamic range broad, he exuded raw power, crusty lust and comic bravado, all reinforced by a trace of gravitas.” In the 2019-20 season, Sigmundsson returns to Théâtre Royal de la Monnaie as Ghost in Dusapin’s *Macbeth Underworld* and LA Opera as Bartolo in *Le Nozze di Figaro*. Last season, Sigmundsson returned to Houston Grand Opera as the Commendatore in *Don Giovanni* and Daland in *Der Fliegende Holländer* and to San Francisco Opera for Vodnik in *Rusalka*, and sang Dansker in *Billy Budd* with Den Norske Opera. He also recently joined the Edinburgh International Festival for the Commendatore in *Don Giovanni*, and Atlanta Opera for Daland in *Der Fliegende Holländer*. Sigmundsson has sung nearly his entire repertoire with the Opéra National de Paris and the Metropolitan Opera, where he sang leading roles in *Der Rosenkavalier*, *Die Entführung aus dem Serail*, *Die Walküre*, *Fidelio*, *Roméo et Juliette*, and *Rusalka*. He has sung leading roles regularly with the Staatsoper Wien, Bayerische Staatsoper, and Semperoper Dresden, where his most recent performances include *La Damnation de Faust*. Other recent engagements include *The Barber of Seville*, Corigliano’s *The Ghosts of Versailles*, and *Le Nozze di Figaro* (LA Opera); *Don Giovanni* (Munich, Berlin); *Der Rosenkavalier*, *Lohengrin*, *Die Meistersinger von Nürnberg* (Berlin); *Der Fliegende Holländer* (Strasbourg); *Medea* (Salzburg); *Parsifal* (Cologne, Florence); *Nabucco* (Copenhagen); *Lohengrin* (Madrid, San Francisco, Los Angeles, Munich); *Tristan und Isolde* (Santiago, Los Angeles, Dallas, Berlin); *Die Walküre* (Naples, Venice, Köln); *Tannhäuser* (Geneva, Amsterdam, Tokyo); *La Damnation de Faust*, *Tristan und Isolde*, *Der Fliegende Holländer*, *Rigoletto*, *Don Giovanni*, *Der Rosenkavalier* (San Francisco); *Lohengrin*, *Lucia di Lammermoor* (Munich); *Die Zauberflöte* (Houston, San Francisco, Toulouse, Santiago); and *Luisa Miller* (Cincinnati).

Kundry



Noted for her “commanding and dramatic presence” (*Opera News*), mezzo-soprano **Renée Tatum** is rapidly gaining critical acclaim on the most prestigious opera stages in the United States. Tatum begins the 2019-20 season as Flosshilde in Wagner’s *Götterdämmerung* with the National Theater in Taiwan, followed by her role debut as Kundry in *Parsifal* for IU Jacobs School of Music Opera Theater. She also returns to the Metropolitan Opera as the Third Lady in *The Magic Flute*, makes her role debut as Amneris in *Aida* with Pensacola Opera, and joins Boston Lyric Opera for *Giulio Cesare*. On the concert stage, she joins the South Bend Symphony Orchestra for Mahler’s Symphony No. 2 and Masterworks Chorale for Beethoven’s *Missa Solemnis*. In the 2018-19 season, Tatum returned to the Met for Nico Muhly’s *Marnie* and the Waltraute and Flosshilde in Robert LePage’s famed *Der Ring des Nibelungen*, and appeared with the Savannah Philharmonic for Mahler’s *Resurrection Symphony* and the Cecilia Chorus of New York in Brahms’ *Alto Rhapsody*. She has recently been heard as Flosshilde and Waltraute in San Francisco Opera’s *Der Ring des Nibelungen*, Flosshilde in *Das Rheingold* at the Tanglewood Festival, Francisca in *West Side Story* at Grand Tetons Music Festival with Donald Runnicles, Jenny in *Threepenny Opera* for Boston Lyric Opera, and as a Flower Maiden in *Parsifal* at

the Metropolitan Opera with new music director Yannick Nezet-Seguin. Concert performances included Penderecki's *Credo* with the Indianapolis Symphony, Durufle's Requiem with Back Bay Chorale, and Bach's *Christmas Oratorio* with the Cecilia Chorus. Tatum was also heard in concert with Warren Jones at Manchester Music Festival and in a concert presentation of *Das Rheingold* with the New York Philharmonic. Other recent performances include the role of Gabriele Bertolier for the Romanti Century's production of *Van Gogh's Ear* at the Pershing Square Signature Center in New York City and the concert "Opera Italiana Forever Young" for Central Park Summer Concerts.

Kundry (cover)



Hailed by *Opera* magazine for her performances of Amneris as "most impressive" and "with a rich mezzo timbre," Israeli mezzo-soprano **Edna Prochnik's** 2019-20 season highlights include Erda in *Siegfried* at Staatstheater Kassel, Filippyevna in *Eugene Onegin* with Israeli Opera, and Mahler's Symphony No. 2 with the Calgary Philharmonic Orchestra. Last season, she sang Erda in *Das Rheingold* and *Siegfried* with Staatstheater Kassel, and Herodias in *Salome* with both Israeli Opera and Spoleto Festival USA. Recent performances include Olga in *Die lustige Witwe* (Paris), Klytämnestra in *Elektra* (Braunschweig), Kundry in *Parsifal* (Stuttgarter Philharmoniker), Die gute Hexe in Maxwell Davis's *The Hogboon* (Luxembourg), and Kurt Weill's *Die Verheissung* (MDR Sinfonieorchester). She also sang Panisello's *Le malentendu* (Neue Oper Wien and Teatros de Canal in Madrid), Mahler's Symphony No. 2 (Basilika Trier), and Marcellina in *Le Nozze di Figaro* (Israel Philharmonic). Prochnik is a previous member of the ensemble at the Nationaltheater Mannheim, where her roles included Kundry in *Parsifal*, Carmen, Santuzza in *Cavalleria rusticana*, Eboli in *Don Carlo*, Klytämnestra in *Elektra*, Herodias in *Salome*, Ulrica in *Un ballo in maschera*, Dame Quickly in *Falstaff*, Dritte Dame in *Die Zauberflöte*, Afra in *La Wally*, Suzuki in *Madama Butterfly*, Prince Orlofsky in *Die Fledermaus*, Babulenska in *The Gambler*, Beroe in Henze's *The Bassarids*, Neris in Cherubini's *Medea*, Clarice in *L'amour de trois oranges*, and Die Alte in Shrecker's *Der ferne Klang*. In Wagner's *The Ring Cycle*, she sang Erda and Fricka in *Das Rheingold*, Erste Norn and Waltraute in *Götterdämmerung*, and Erda in *Siegfried* with the company.

Erster Gralsritter



During the last year, **Spencer Lawrence Boyd**, a 25-year-old tenor from Canal Fulton, Ohio, has sung Henrik Egerman (*A Little Night Music*) with Aspen Opera Center, Nemorino (*The Elixir of Love*) at IU, the tenor soloist in Beethoven's Symphony No. 9 with the Louisville Orchestra, and the tenor soloist in Haydn's *The Creation* with Winona State University Orchestra (Minnesota). He has also sung several excerpts from leading roles such as Il duca di Mantua (*Rigoletto*), Faust (*Faust*), Tom Rakewell (*The Rake's Progress*), and more. Other operatic performances include Eisenstein (*Die Fledermaus*), Tamino (*Die Zauberflöte*), and Arlecchino (*Pagliacci*) with Kent State Opera (Ohio), Vincent in Gounod's *Mireille in Périgieux*, France, Don Curzio (*Le Nozze di Figaro*) and Prince Yamadori (*Madama Butterfly*) with Cleveland Opera Theater, and Nika Magadoff (*The Consul*) with Nightingale Opera Theater (Ohio). Boyd earned a Master of Music degree from Kent State University and a Bachelor of Music degree from Chapman University (California). He is

currently pursuing a Doctor of Music degree at the Jacobs School of Music, studying with Carol Vaness. He is an associate instructor of voice at Jacobs and has taught voice and music at two public school districts in addition to a number of private music organizations across the country. Boyd will also be seen in IU Jacobs School of Music Opera Theater's production of *Gianni Schicchi*, as Gherardo, in February.

Zweiter Gralsritter



Bass-baritone **Steele Fitzwater** is a second-year master's degree student studying with Peter Volpe. From Dawson, West Virginia, Fitzwater completed his undergraduate studies in vocal performance, and fashion and design at Miami University (Ohio). In the 2018-19 season, he made his Indiana University debut as Achilla in Handel's *Giulio Cesare* and Javelinot in Poulenc's *Dialogues of the Carmelites*, and joined Central City Opera as a studio artist in its summer festival. A prominently featured performer during his undergraduate studies, Fitzwater was seen as Don Alfonso (*Così fan tutte*), Death (*Savitri*), Carl-Magnus Malcolm (*A Little Night Music*), Frank Maurrant (*Street Scene*), and Capt. Jonathan Williams in the world premiere of Daniel Levy's *The Martian Chronicles*, with Miami University Opera. During two summers with the Janiec Opera Company at the Brevard Music Center, he performed Doctor Bartolo (*Le Nozze di Figaro*), Carl Olsen (*Street Scene*), Snug (*A Midsummer Night's Dream*), and Louis Cyphre in the world premiere of J. Mark Scarce's *Falling Angel*. As a concert soloist, he has performed the bass solos in Haydn's *The Creation*, Handel's *Messiah*, Schubert's Mass No. 2, and DuBois' *The Seven Last Words of Christ*. Later this season, Fitzwater will make his role debut as the title character in the IU Jacobs School of Music Opera Theater production of Puccini's *Gianni Schicchi*.

Erster Knappe



Soprano **Kayla Eldridge** is a native of Bentonville, Arkansas, pursuing a Master of Music degree at the Jacobs School of Music under the tutelage of Carol Vaness. With IU Jacobs School of Music Opera Theater, Eldridge has performed as an opera chorus member in *La Bohème*, *Peter Grimes*, *Lucia di Lammermoor*, and *The Elixir of Love*. Last year, she won the Encouragement Award from the Metropolitan Opera National Council Auditions in the Arkansas district. Eldridge performed the role of Sœur Mathilde in *Dialogues of the Carmelites* with IU Jacobs Opera Theater, and, most recently, performed the role of Cleopatra in *Giulio Cesare in Egitto* with Chicago Summer Opera. This spring, she will perform the role of Flora Bervoix in *La Traviata* with IU Jacobs School of Music Opera Theater.

Zweiter Knappe



Mezzo-soprano **Jing Zhang**, from Beijing, China, is pursuing a Performance Diploma in Voice Performance with Carlos Montané. Zhang earned an M.M. in Voice Performance from Peking University. With IU Opera Workshop, she has appeared in scenes as Maddalena (*Rigoletto*). Her previous credits include Zita in *Gianni Schicchi*, Cherubino in *Le Nozze di Figaro*, and the Third Lady in *Die Zauberflöte*.

Dritter Knappe



Tenor **Carl Rosenthal** is pursuing a Master of Music in Voice Performance with Carol Vaness and Gary Arvin. He was last seen on the IU Jacobs School of Music Opera Theater stage as the Celebrant in Leonard Bernstein's *Mass*, a performance for which he was praised as "compelling" and "splendid" by *The Herald-Times*. Other appearances include Le Chevalier de la Force in *Dialogues of the Carmelites*, Bernardo in *West Side Story*, and Mr. Martini in *It's a Wonderful Life*. He will return in February as Gastone in *La Traviata*. A recipient of the Georgina Joshi International Fellowship, he debuted in 2018 at Prague's historic Estates Theater as Tamino in *Die Zauberflöte* with the Prague Summer Nights Festival. Other performances include Gonzalve in *L'heure Espagnole* (Carol Vaness Opera Workshop), Mr. Erlanson/Henrik cover in *A Little Night Music* (Aspen Music Festival), and tenor soloist in Erik Ransom's *Man and the Sea* cantata (Jacobs School Recital Series). Originally from Arlington, Virginia, Rosenthal earned a Bachelor of Arts from Columbia University and worked as a mathematics teacher in New York City before coming to Jacobs. In addition to his musical studies, he currently works as an associate instructor in math at the IU School of Education.

Vierter Knappe



American tenor **Gregory McClelland** is a Performer Diploma candidate at the Jacobs School of Music studying with Jane Dutton and Gary Arvin. This past summer, McClelland traveled to Mercatello sul Metauro, Italy, to participate in the International Opera Performance Experience program, performing Fenton in Verdi's *Falstaff* under the baton of James Caraher. McClelland was last seen on the Musical Arts Center stage in the collegiate premiere of *The (R)evolution of Steve Jobs* (Steve Wozniak) under the baton of Michael Christi. Other IU Jacobs School of Music Opera Theater performances include *Dead Man Walking* (Howard Boucher) and the ensembles of *Oklahoma!* and Bernstein's *Mass*. He has performed opera scenes from *La Bohème* (Rodolfo), *Die Fledermaus* (Eisenstein), *Werther* (Werther), *Rigoletto* (Duke), *Don Giovanni* (Don Ottavio), and *Norma* (Pollione). McClelland has sung with NOTUS under the direction of Dominick DiOrio as well as with the University Singers and University Chorale, both led by Betsy Burleigh. This past January, the Oratorio Chorus performed Mahler's Symphony No. 2 with the Cleveland Orchestra under the baton of Franz Welser-Möst. McClelland earned his Master of Music degree from the Jacobs School of Music. He is originally from northwest Pennsylvania and earned a Bachelor of Music Education degree from Westminster College in New Wilmington, Pennsylvania.

Blumenmädchen



Ahyoung Jeong is a soprano from Seoul, Korea, pursuing a Doctor of Music degree with Brian Horne. She earned a Bachelor of Music degree from Seoul National University in 2013 and a Master of Music degree from New England Conservatory in 2015. Her competition awards include second place in the National Association of Teachers of Singing (NATS) Indiana Regional, first place in the NATS New England Regional, and third place in the NATS National Round. Jeong has performed roles

including Susanna in Mozart's *Le Nozze di Figaro* at Mozarteum Salzburg, Austria, Morgana in the Emerald City Opera production of Handel's *Alcina*, Zerlina in Mozart's *Don Giovanni* at Prague Estates Theater, and Papagena in the New England Conservatory production of Puccini's *La Bohème*. As a concert singer, Jeong has sung soprano solos of sacred music including Mozart's Requiem and three Bach cantata concerts with Bloomington Chamber Singers.



Virginia Mims is a first-year master's student studying with Alice Hopper. A native of West Palm Beach, Florida, Mims earned her bachelor's degree from the Jacobs School of Music last May. She was seen as Cleopatra in IU Jacobs School of Music Opera Theater's *Giulio Cesare* in February. She has sung the roles of Mary Bailey (*It's a Wonderful Life*) and Marian Paroo (*The Music Man*) as well as being in the choruses of *Mass*, *Dialogues of the Carmelites*, *Don Giovanni*, *Madama Butterfly*, and *Oklahoma!* during her undergraduate studies. Last summer, Mims sang scenes from *Lucia di Lammermoor*, *Così fan tutte*, and *Falstaff* in Lucca, Italy, with the Opera Lucca Program. Attending Brevard's Janiec Opera Program in 2017, she sang the role of Susanna in Mozart's *Le Nozze di Figaro* and in the program's "Opera's Greatest Hits" and "Gilbert and Sullivan Showcase" concerts. She was soprano soloist for Bloomington's Early Music Bach Cantata Project in October and will create a recital showcasing the joy of singing in spring 2020.



Mezzo-soprano/contralto **Lauriane Tregan-Marcuz**, a native of France, is in the second year of her Performer Diploma studies at the Jacobs School of Music, studying with Carlos Montané. She studied violin and music theory for 10 years in the Conservatoire of Bordeaux. At the age of 21, she studied singing with Lionel Sarrazin in Bordeaux and Marie-Ange Todorovitch in Switzerland. In summer 2017 in Weimar, Germany, she met Montané and decided to join his studio at Jacobs in fall 2018. She performed Madame de Croissy in *The Dialogue of Carmelites* with IU Jacobs School of Music Opera Theater in October 2018 and the Third Lady in *Die Zauberflöte* with Lyric Opera Studio Weimar in summer 2017. During her musical training with Sarrazin, Todorovitch, and Salvatore Caputo in France, Tregan-Marcuz performed as a soloist in Mozart's Requiem at Opera of Bordeaux. She was also in the ensemble of *Candide* with the Glimmerglass Festival and has sung in several opera houses in Europe.



Mary Catherine Wright-Beath is a first-year M.M. student studying with Heidi Grant Murphy and is also pursuing a master's certificate in vocology. She is a graduate of the University of Kentucky, where she graduated summa cum laude with a B.M. in Voice Performance and a certificate in musical theater. She is a Metropolitan Opera National Council Audition Mid-South Region finalist and was the first-place winner of the Alltech Vocal Scholarship Competition. Most recently, Wright-Beath performed the role of Susanna in *Le Nozze di Figaro* with the Savannah Voice Festival and covered the role of Sister Catherine in Kentucky Opera's production of *Dead Man Walking*.



Hayley Abramowitz, soprano, is dually based in the DC-metro area and Bloomington, Indiana. She is pursuing her M.M. in voice, studying with Carol Vaness. Most recently at Jacobs, Abramowitz appeared as Clio in the second American performance of Handel's little-known serenata, *Parnasso in festa*. She also gave her first master's recital, featuring selections from Strauss's *Brentano Lieder* and a world premiere for composer and friend William Kenlon. She is a passionate advocate of new music and has given numerous premieres in the last several years. This season, she will also appear as Nella in *Gianni Schicchi* with IU Jacobs School of Music Opera Theater and will make her professional debut, singing Mahler's Symphony No. 4 with Marin Alsop and the Baltimore Symphony Orchestra. This past summer, Abramowitz appeared as Erato in Handel's *Terpsicore* with the American Bach Soloists Academy. Before coming to Jacobs, she studied with Delores Ziegler at the University of Maryland, where she earned a B.M. cum laude. While there, she enjoyed four seasons with OperaTerps, singing roles including The Defendant (*Trial by Jury*), Quiteria (*Don Quichotte*), Lucy (*The Telephone*), and Madame Herz (*Der Schauspieldirektor*). She was also an active member of the University of Maryland choirs, both as a chorister and a featured soloist. Concert engagements include Mozart's *Krönugsmesse* and the world premiere of the treble revoicing of Ešenvalds's *Only in Sleep*.



Mezzo-soprano **Tal Heller**, from Boston, Massachusetts, is pursuing a Performer Diploma under the tutelage of Heidi Grant Murphy. Heller earned her Bachelor of Music and Master of Music degrees from Mannes College of Music in New York City.

Herzeleide



Alison Calhoun is associate professor of French/francophone studies and theater at Indiana University. Her research and teaching focus on early modern drama, Renaissance philosophy, Montaigne studies, and the history of emotions, with a particular interest in the history of French opera.

Philharmonic Orchestra

Violin I

Han Na Lee
Laurel Gagnon
Bogdan Hudzelaitis
Erina Buchholz
Moon Kim
Nathan Bomans
Byron Laing
Alexi Whitsel
Ching-Yu Chung
Michele Barbosa
Ian Aegerter
Annamaria Vasmatzidis

Violin II

Emilie Auclair
Gee O Son
John Heo
Su Bin Shin
Jodi Dunn
Nahye Lee
Joshelle Conley
Monica Chen
Abby Fuchs
Michael Klinberg

Viola

Duncan Steele
Libby Doubrawa
Quinn Robinson
Steven Baloue
Lexi Barrett
Anna Mach
Christian Johnson
Erin Tang

Cello

Hannah Scarborough
Philip Lee
Adam Lee
Christopher Santos
Alex Lavine
Gabriel Jimbo Viteri
Euijin Park
Dong Hong

Bass

Sam Rocklin
Jesse Lu
John Cleere
Jonathon Piccolo

Flute

Rachel Tormann
Clara Loisch
Di Cao

Oboe

Matthew Maroon
Donovan Bown
Jordan Plunkett
Kayla Bull, *English Horn*

Clarinet

Li-Jie Yu
Daniel Aisenberg
Jack Kartsotis
Charles Craig, *Bass*

Bassoon

Samuel Rhoton
Lauren Hallonquist
Jake Taniguchi
John Kaiser, *Contra*

Horn

Rebecca Salo
Charley Ball-Fuller
Daniel Dickey
Michael Stiles
Sam Johnson

Trumpet

Jack Smid
Travis Higgins
Richard Stinson

Trombone

Nicholas Kemp
Megan Martin
Chance Gompert, *Bass*

Tuba

John Mangonon

Timpani

Kevin Castelo
Matthew West

Percussion

Cary Anderson

Harp

Taylor Flesman
Caroline Robinson

Off-Stage Banda

Tyler Jesko, *Trumpet*
Henry Drembus, *Trumpet*
Colin Babcock, *Trombone*
Brendan Sullivan, *Trombone*
Andrea Dollinger, *Trombone*
Jack Armstrong, *Trombone*
Cary Anderson, *Drum*
Benjamin Steinqest, *Bells*
John Tadlock, *Bells*

Orchestra Manager

Lawson Long
Quinn Robinson, *Asst.*

Orchestra Set-Up

Libby Doubrawa
Gabriel Jimbo Viteri
Anna Mach
Quinn Robinson

Librarian

Cynthia Stacy

Student Production Staff

Associate Conductor	Alvin Ho
Assistant Conductor	Christian Olson
Assistant Director.	Catherine Compton
Associate Chorus Master	Hana J. Cai
Assistant Chorus Masters	Sam Grace, Caio Guimarães
Assistant to the Costume Designer.	Erin Barnett
Coach Accompanist.	Lucas Nogara
Head Flyperson.	Nick Castellini
Rail Crew.	Camden Bush, Ryan Chan, Sidney Epple Mara Flynn, Austin Helton, Quynn Hickey Travis Klosinski, Kyle Resener Josh Rogers, Isabella Stachurski
Stage Crew	Anna Anderson, J Bird, Cassie Hakken Harper Humphrey, Lizzy Newton, Jeffrey Robison Ruby Rodriguez, Jon Smith
Electrics Crew	Kylie Abrams, Jordan Burger, Sara Dailey Abigail Fickinger, Sao Fish, Gabe Gabriel Olivia Lawson, Jessica Mawhorr, Aeris Meadows Jordan Moment, Erin Rieger, Morgan Rodabaugh Chris Sims, Jacob Todd, Ashley Trotta
Props Master	Rachael Banach
Paint Supervisors	Rebeca Greenan, Amber McKoy
Paint Crew	Olivia Boisselier, Eliza Fry, Casey Carroll Lucia Davila, Maria de Casas Rucinski, Allison Grady Isobel Kennedy, Riley Knight, Tom Pendley
Wig Assistants	Marissa Arnold, Lilly Leech
Costume Crew	Elizaveta Agladze, Haley Baker, Bradley Bickhardt Autumn Brandt, Liz Culpepper, Jack Grohmann Mary Martin, Mairead Moore, Rachel Schultz Jenna Sears, Mary Kate Shearer Francis van Vuuren, Natasha Viener
Audio Production Crew	Joshua Fore, Michael Kovacs Alona Meek, Patrick Reeves

Jacobs School of Music Honor Roll

Fiscal Year 2018-19

Individual, Corporate, and Foundation Supporters

The Jacobs School of Music wishes to recognize those individuals, corporations, and foundations who have made contributions to the school between July 1, 2018, and June 30, 2019. Those listed here are among the Jacobs School's most dedicated and involved benefactors, and it is their outstanding generosity that enables the IU Jacobs School of Music to continue to be the finest institution of its kind in the nation.

———— \$1,000,000 and Up ————

Luba Dubinsky*

David Jacobs

———— \$100,000 - \$999,999 ————

Thomas Pegg and Sherry Hustad
The Joshi Family

William C. Rorick
Richard and Rosemary Schweer

Mary H. Wennerstrom Phillips

———— \$10,000 - \$99,999 ————

Warren J. Brodine and Mark A. Rhein
Roberta Brokaw, D.M.
Jack and Pam Boggs Burks
W. Leland Butler and Helen M. Butler
Susan Cartland-Bode and Henry J. Bode
Richard and Lynn Cohee
Frank C. Graves
Steve and Jo Ellen Ham
Lawrence and Celeste Hurst

Howard and Linda Klug
Dr. Monika H. and Dr. Peter H. Kroener
Shalin C. Liu
Nancy S. McNutt
Delano L. Newkirk and Luzetta A. Newkirk
Joanne E. Passer, Ph.D., and Deborah S.
Wehman, D.P.M.
Geraldine Ruegg*
Ann Saslav*

Virginia Schmucker*
Jim and Jamie Self
Sandra Brown Sherman and Robert Sherman
W. Richard Shindle, Ph.D.
The Dr. John Winston Spanier Family
Lisa and Eric Vayle
Lillie F. Wallick
Margaret R. Watanabe, M.D., Ph.D.
Mimi Zweg

———— \$5,000 - \$9,999 ————

Roy and Janice Applegate
S. Sue Aramian
Lida M. Baker
Robert Barker and Patsy Fell-Barker
Joshua D. Bell
Lawrence Brownlee
Craig and Crystal Bryant
Jill and Shaun Byrnes
Bill and Anita Cast
Patricia Corbin*
William and Marion Crawford
Jean and Doris Creek
Stephany A. Dunfee

James and Elizabeth Ericksen
Anne T. Fraker
Rita B. Grunwald
Peggy and Thomas Hall
Ann Harrison
Vicki and Thomas King
Harlan L. Lewis and Doris F. Wittenburg
Gary and Carol Marula
Perry J. Maull
Melissa and Grady McGrannahan
James F. Mellichamp, D.M.
Jon and Annette Olson
Nancy Gray Puckett

Stanley E. Ransom
Barbara and Gwyn Richards
John and Lislott Richardson
Quincy J. Roberts
Lucy Sagle
Sue Ellen Scheppke and Nicholas M.
Barbaro
Jeannette J. Segel
John and Jennifer Sejdinaj
Karen Shaw*
Mark A. Sudeith
Nancy A. White and Allen R. White

———— \$1,000 - \$4,999 ————

Ruth Albright
Diana and Rodger Alexander
Charlene and Donald Allen
Susan and James Alling
Teresa D. Ayres and John D. Ayres,
M.D., J.D.
Susan H. Backer
Linda A. Baker
Mark K. Bear
William H. Bocock
David and Paula Bonner
Brian and Alexis Booher
Jayne and Daniel Brackemyre
Mary Louise and Schuyler Buck
Eleanor Byrnes*
Jim and Laura Byrnes
Cathleen Cameron
Joyce E. Claffin
Edward S. Clark
Richard J. Clifton and Laura A. Clifton
Mark and Katy Cobb

Daniel H. Cole and Izabela Kowalewska-Cole
J. Michael and Marcia Conway
Carol and John Cornwell
Mary Alice Cox and James Koch
Donna and David Dalton
Carolyn A. Deodene
Jay and Jacqueline Dickinson
Melissa and Eric Dickson
Gary L. and Sandra G. Dowty
Jane and D. Kim Dunnick
Lois and Nile DUSDIEKER
Frank Eberle
Phil Evans and Herbert Kuebler
Harvey and Phyllis Feigenbaum
Daniel Feldt
Ruth Fischer*
Mary Anne and Edward Fox
Jane M. Fricke and Jeff Steele
Susan and Scott Gorham
Glen G. Graber
Robert R. Greig

Robert and Martha Gutmann
Fadi F. Haddad and Aline I. Hamati-Haddad
Souheil and Alejandra Haddad
Richard T. Ham and Allison Stites
Dena Rae Hancock and Philip Robert Cairo
Robert and Ann Harman
Lenore S. Hatfield
Dr. Gene and Judy Hedrick
Bernhard C. Heiden*
Daniel F. Hewins
J. Stanley Hillis, M.D., and Alice G. Hillis
James R. Hodge
L. Scott and Donna J. Horrall
Peter P. Jacobi
Michele and Robert Johns
Patricia C. Jones
Michael W. Judd
Thomas Kasdorf
Timothy W. Kirtleson and Michael C.
Donaldson
Susan M. Klein and Robert Agranoff

John and Nancy Korzec
James W. and Evelyn Whaley LaFollette
Scott R. Latzky and Teresa S. Weber
Robert F. LeBien and Sara J. LeBien*
Stine M. Levy
Warren E. Loomis, III
Earl F. Luetzelschwab and Deborah I. Burkhart
Alexander and Diana Mack
P. A. Mack, Jr.
Julia and Charles McClary
Carol McDonald
J. Peter Burkholder, Ph.D., and P. Douglas McKinney
Sylvia A. McNaair
David E. McNeil
President Michael A. McRobbie and First Lady Laurie Burns McRobbie
Dr. John M. Miller* and Geraldine Miller
Jim and Jackie Morris
John T. and Barbara M. Morris
Joe and Sandy Morrow
Kristina Muxfeldt
Lawrence Myers, Jr.
James E. Neff and Susan E. Jacobs-Neff

Cyndi Dewees Nelson and Dale Nelson
Louise and Leonard* Newman
Donna and Timothy Noble
Carol S. Nole
Edward and Patricia O'Day
Joan C. Olcott
Margaret A. Piety
Agnes and Robert Plunkett
Stephen R. Pock and David Blumberg
John and Joyce Poling
Gary and Christine Potter
George and Wendy Powell
Joy K. Rasin
Nancy P. Rayfield
Andrew F. Recinos and Peggy A. Cooper
Al and Lynn Reichle
Jerry and Cynthia Robinson
David and Karen Rohlfing
Richard A. Russell and Cynthia Bydlinski
Randy W. Schekman
Judith L. Schroeder
Phyllis C. Schwitzer
Richard Searles
Christine J. Shamborsky
Nathan and Jessica Short

Jefferson and Mary Shreve
Curtis R. and Judy Chapline Simic
Janet S. Smith
W. Craig Spence
Jennifer and Richard Stiles
Patricia J. Stiles
Ellen Strommen
Gregg and Judy Summerville
Paula W. Sunderman
R. Michael Suttle and Carolyn C. Suttle
Karen M. Taylor, D.M.
James R. Thrasher
Rebecca M. Tichenor
Alice M. Tischler
Randall L. Tobias and Deborah F. Tobias
Catherine and Larry Waynick
J. William Whitaker, M.D., and Joan M. Whitaker
Mark Wiedenmayer
Tony J. Wiederhold and Susan K. Conroy
Michael J. Williamson and Kathleen Weston
Steve and Judy Young
John and Linda Zimmermann

\$500 - \$999

James and Ruth Allen
Niel and Donna Armstrong
David Y. Bannard and Mary Ashley
Charles and Gladys Bartholomew
Shirley Bell
Franklin and Linda Bengson
Jeri L. Betar
Karen and Arthur Bortolini
Ruth O. Boshkoff
Mary and Montgomery Brown
James and Carol Campbell
Marcella and Scott Caulfield
James and Carol Clauser
Charles and Helen Coghlan
Katherine R. Covington
Jack N. Cox
Jeffrey C. Dauler
Susan J. Devito
John Dyson*
Tom and Kathy Eggleston
Stephen A. Ehrlich
Ingrid B. Faber and Robin M. Lasek
Joseph R. Fickle
Jann and Jon Fujimoto
Suzanne and Frank Gault
Thomas E. Gerber
Alan R. Goldhammer
Arlene Goter
Donald and Judith Granbois
Jeffrey D. Green
Kenneth C. Green, II
Robert A. Green and Lee J. Chapman
Linda F. Gregory
Allan F. Hershfield and Alexandra B. Young

E. Jane Hewitt and Richard H. Small
Rona Hokanson
Margaret and George Holden
William and Karol Hope
Dr.* and Mrs. Frank N. Hrisomalos
Jeffrey and Lesa Huber
Robert J. Hublar
Sarah J. Hughes and A. James Barnes
Diane S. Humphrey
Warren W. Jaworski
Traci and Vladan Jovanovic
Martin and Linda Kaplan
Marilyn J. Keiser
Carol R. Kelly
George and Cathy Korinek
Ronald Kovener
Virginia and Frederick Krauss
Yvonne Y. Lai and Kenneth P. Mackie
Jerry and Jane Lewis
Beverly A. McGahey
James D. McLuckie
Daniel and Misty Novak
Eduardo A. Ostergren and Helena Jank
Elise Suppan Overcash
Sujal and Elizabeth Patel
Carol and Wade Peacock
Phuc Q. Phan
Robert L. Ralston
Margaret and Jay Rifkind
Scott and Katherine Riley
Bruce E. Ronkin and Janet L. Zipes
Randal I. Rosman
David Sabbagh
Juliet Sablosky

Scott C. and Kay Schurz
Becky and Jeffrey Schwartz
Robert E. Schweitzer
Edward S. Selby
David A. Sheldon
Martha and Jeffrey Sherman
Rebecca and John Shockley
Julia Short
Michael D. Shumate
Edwin L. Simpson
James B. Sinclair and Sylvia Van Sinderen
Laird and Nancy Smith
Robert L. Smith and Janice L. Lesniak
Ronald L. Sparks
Blount and Anna Stewart
Bruce and Shannon Storm
Robert D. Sullivan
Dana W. Taylor
Susan C. Thrasher
Mary and Donald H. Trainor, Jr.
Henry and Celia Upper
Elizabeth R. Vance-Rudolph
Martha F. Wailes
Sarah F. Ward
Mark and Gail Welch
Alan and Elizabeth Whaley
Carolyn A. White
Richard A. White
David L. Wicker
Patricia L. Williams
Carl Wiuff, Jr.
Donna and Richard Wolf
Galen Wood

\$250 - \$499

Karen and James Adams
Roger and Carol Allman
James F. Ault, Jr.
Samuel and Janet Baltzer
Susan D. Bartlett
John E. Bates
Frederick and Beth Behning
Michele Bergonzi
Jonathan P. Braude
Craig M. Brown
Mary Susan and Zachery Buhner

Betsy L. Burleigh
Derek and Marilyn Burleson
John N. Burrows
V. Barbara Bush
Gerald J. Calkins
Phyllip B. Campbell
Gerald and Beatrice Carlyss
Sarah Cleverger
Karen-Cherie Cogane and Stephen Orel
Richard K. Cook and Roger Roe
Todd and Darla Coolman

Edmund and Ruth Cord
Gretchen E. Craig
Ray and Molly Cramer
David Crandall and Saul A. Blanco Rodriguez
Lawrence L. Davis
Barbara A. Dell
Mary Lynn and Scott Denne
Carol J. Dilks
Lee and Eleanor Dodge
Barbara and Richard Domek

Clarence H. and Judith Doninger
 Sterling and Melinda Doster
 Sharon and John Downey
 Danny and Jeanette Duncan
 Mark F. Eckhardt and Halina Goldberg
 David and Arlene Efron
 Elaine and Philip Emmi
 Thomas and Lynn Ensor
 Deborah and Jeffrey Ewald
 Mark and Jennifer Famous
 Constance C. Ford
 David and Linda Giedroc
 Kathy and Robin Gilbert-O'Neil
 Michael and Patricia Gleeson
 Ross A. Gombiner and Anita C. Lee
 Sylvia and Harold Gortner
 Mary A. Gray
 Kenneth and Janet Harker
 Mary Ann Hart
 James Richard Hasler
 Sheila B. Hass
 Steven L. Hendricks
 Ernest N. Hite and Joan E. Pauls
 Susanne and Herbert Hochberg
 Chris L. Holmes and David M. Burkhardt
 Nancy O'Reilly Hublar
 James S. Humphrey, Jr.
 Anita Louise Jerger
 Margaret and Donald Jones
 Russell L. Jones
 Thomas and Mary Kendrick
 Daniel B. Keough
 Jillian L. Kinzie and Joseph Throckmorton
 Karen L. Klages
 Martin and Janie Kocman
 Lee A. Kohlmeier
 Kate Kroll
 Judith and Dennis Leatherman
 Gregory and Veronica Leffler
 Diana Dehart Lehner
 Amy L. Letson

Jon and Susan Lewis
 Ayelet E. Lindenstraus and Michael J. Larsen
 Barbara and John Lombardo
 Marie T. Lutz
 Robert W. Magnuson
 Judith A. Mahy-Shiffrin and Richard M. Shiffrin, Ph.D.
 Mayer and Ellen Mandelbaum
 Lisa K. Marum
 John M. Maryn
 Sallie Liesmann Matthews and Jim K. Matthews
 Andrea Matthias
 Ahona T. Mazumder
 Jerry W. and Phyllis McCullough
 Winnifred L. McGinnis
 Ellen L. McGlothlin Priest
 James L. McLay
 Kathleen K. McLean
 Howard D. Mehlinger
 Brian L. Meyer
 Kathleen and Emanuel Mickel
 Ben F. Miller
 Linda L. Moot and Andrew P. Levin
 Barbara I. Moss and Robert E. Meadows
 Gerald L. and Anne Klock Moss
 Patricia and John Mulholland
 Nobuyo Nishizaka
 Anne and Hugh O'Donnell
 Harold and Denise Ogren
 Melinda P. O'Neal
 Herbert E. Parks
 Charles and Linda Pickle
 Patricia Pizzo
 Darlene and Stephen Pratt
 Brian and Susan Przystawski
 Heidi and Mike Ragan
 Kelly P. Ragle
 Jorgen and Martha Rasmussen
 Lauren N. Reed
 Phyllis E. Relyea

David and Leanna Renfro
 Kenneth L. Renkens and Debra L. Lay-Renkens
 Joann and Robert Robertson
 Ilona K. Richey
 Timothy J. Riffle and Sarah M. McConnell
 Paul and Barbara Ristau
 Linda J. Rosenthal
 Ruth and Robert Salek
 Mark and Anne Sauter
 Lynn L. Schenck
 Marilyn F. Schultz
 Fritz and Anne Schumann
 Christopher and Janet Schwabe
 Sarah and Danny Sergesketter
 John and Lorna Seward
 Varda Shamban
 John L. Snyder, Jr.
 Cheryl A. Sorrels
 Nina and Joseph Steg
 Linda Strommen
 Lewis H. Strouse
 Richard C. Sutton and Susan L. Willey
 Yasuoki Tanaka
 Linda J. Tucker
 Mary E. Ulrey
 Kenneth and Marcia Vanderlinden
 John and Tamyra Verheul
 Scott G. Verschoor
 Sharon P. Wagner
 Rebecca and Wayne Weaver
 Carl R. Weinberg
 Roger and Barbara Wesby
 E. G. and Sharon White
 Jim and Wilma* Wilson
 Maryann M. Wirth
 Carol A. Wise
 Teresa and Peter Wolf
 Earl S. Woodworth
 Jonathan L. Yaeger and Karen Abravanel
 Giovanni Zanovello

— \$100 - \$249 —

Paul T. Abrinko and Monika Eckfield
 Lois C. Adams Miller
 Janet and Paul Addison
 Ann H. Adinamis Impiccicchio
 Michael P. Ahearn
 Mr. Richard L. Alden and Ms. Ann T. Alden
 Shirley T. Aliferis and Cary Passeroff
 David and Melanie Alpers
 George Alter and Elyce Rotella
 James and Christine Amidon
 Paula J. Amrod
 Evelyn and Richard Anderson
 Bruce E. Andis
 Stacia L. Andis
 Jean Carter Appel
 Margaret and Charles Athey
 Judith Auer and George Lawrence
 Helen L. Aylsworth
 James and Mary Babb
 Tara and Bob Babcock
 Carolyn A. Bailey
 Donna M. Baiocchi
 Elizabeth Baker and Richard R. Pugh
 Mark J. Baker
 W. Claude and Susan Baker
 C. Matthew Balensuela
 Wesley A. Ballenger, III
 Sandra C. Balmer
 Daniel Balog
 Pamela Pfeifer Banks
 Brian Barnicle
 Allison and Mark Barno

Patricia W. Barrett
 Robert R. Bartalot
 Lorie Selander Bartel and Allan R. Bartel
 Sue A. Beaty
 James and Lynda Beckel
 Jean C. Beckman and Helen L. Templeton
 David and Ingrid Beery
 Elizabeth and Bruce Bennett
 Ron and Mary Ann Bennett
 Audrone M. Bentham
 Sharon M. Berenson
 Richard H. Bernhardt
 Ernest Bernhardt-Kabisch
 Wayne Bialas
 Olesia and Andrew Bihun
 Cheryl A. Bintz
 David and Judy Blackwell
 Ronald and Regina Blais
 Gayle and Heinz Blankenburg
 Julian M. Blumenthal
 John and Mary Blumenthal
 Michael and Pamela Bobb
 Peter and Nancy Boerner
 Ruth and Christopher Borman
 Cynthia and Bennet Brabson
 Marla and Scot Bradley
 Elizabeth M. Brannon
 Barbara and Edward Bredemeier
 James and Anne Bright
 Jaclyn and Bill Brizzard
 Laurie Brown and Daniel Carroll
 Malcolm H. Brown
 Lawrence W. Browne

Stanley R. Brubaker
 Edward P. Bruenjes
 Margaret H. Brummit
 Mark and Jody Bruns
 William R. Buck
 Jane Bunnell and Marc Embree
 Jeffery L. Burch
 Shirley Y. Burger
 Jason A. Burke
 Doris J. Burton
 Jason J. Butera
 Rebecca and James Butler
 Margaret R. Buttermore
 William P. Butz
 Beatrice H. Cahn
 June M. Calkins and Emily J. Livant
 Tommy and Cheryl Campbell
 Vivian Campbell and Robert L. Jones
 Joseph R. Car
 Kimberly S. Carballo
 Barbara J. Carlson
 Walter D. Carroll
 Linda L. Case
 Thomas and Linda Castaldi
 Susan and Robert Cave
 Carroll B. Cecil and Virginia Long-Cecil
 George and June Chalou
 Harriet R. Chase
 Gayle and Robert Chesebro
 Jonathan D. Chu
 Christopher B. Clark
 Steve and Sonya Clark
 Virginia B. Coats

Timothy Coffman and Elizabeth
Liederbach-Coffman
Daniel J. Coleman
Robert and Marcia Coleman
Donald and Shirley Colglazer
Michael and Pamela Colwell
Jean L. Cook
Michael J. Coresh
Kevin and Laura Cottrell
Nora B. Courier
Steven and Sandy Courtney
Matthew D. Coy
Cynthia McAllister Crago and Don H.
Crago*
Dana and Grace Craig
Genevieve S. Crane
Ernest and Roxanna Crawford
James and Sue Crisman
H. Proctor Crow
Samuel and Susan Crowl
Cheryl and Bradley Cunningham
J. Daniel and Mary Cunningham
Michael G. Cunningham
J. Robert Cutter
Eugene B. Daniels, Jr.
Gerald and Janet Danielson
Ed and Jane Daum
Jeffrey and Pamela Davidson
Charles H. Davis, Ph.D., and Debora
Shaw, Ph.D.
Samuel J. Davis, Jr.
Conrad and Susan De Jong
Walter H. DeArmit
Lisa and R. Jack Deinlein
Matthew and Lynda Deitchle
Imelda Delgado
Lisa C. DeLuca
Patrick and Karen Dessent
Giuliano Di Bacco and Renata
Pieragostini
Michael and Alina Di Liddo
Richard J. Dick and Mary A. Mitchell-
Dick
Kim and Dianne Diefenderfer
Deborah Divan
Amy R. Dorfman
Paul and Judith Douglas
Paul T. Dove
Beth and John Drewes
Hannah L. Dubina and Wael Tadros
Gregory S. Dugan
Kevin J. Duggins
James Dukles, Jr.
Joseph J. Dukles, Sr.
Linda, Diane, Christine, and Amy
Dukles
Marc R. Dukles
Alan and Juliet Duncanson
Sarah J. Dunn and J. Michael Dunn
Silsby S. Eastman
Joseph E. Elliott
Anna A. Ellis
Mark A. Ellis
Michael J. Ellis
Joe and Gloria Emerson
Mary and Herman Emmert
Stanley and Pamela Engle
Dorothy and David Evans
James Fahey
Teresa and Carlton Fancher
Suzanne and John Farbstein
Jean E. Felix
Arthur and Therese Fell
Craig and Carol Fenimore
Deanie and Robert* Ferguson
Richard and Susan Ferguson
George and Jo Fielding

David and Judith Fienen
Harriet and William Fierman
Mary Ellen Fine
James and Evelyn Fisher
Sharon and Robert Ford
Jean and Roger Fortna
Amy and Raymond Foster
Lincoln Foster
Bruce and Betty Fowler
Linda A. Frauenhoff
Lori Latimer French
Katheren and William Fretz
Donald and Sandra Freund
Doug Friend and Susan Dirgins-Friend
Bernard Frischer and Jane Crawford
Johanna Frymoyer and Carolann E. Buff
Mauricio Fuks and Violaine Gabriel-Fuks
Lynda Fuller Clendenning and Robert L.
Fuller
Sharon and Norman Funk
Sean F. Gabriel
Allison D. Gehl
David B. Gelb
Bernardino and Caterina Ghetti
Robert J. Giesting
Richard Gill and Patricia M. Goyette-Gill
Elizabeth and Robert Glassey
Lorraine Glass-Harris
Constance Cook Glen and James Glen
Vincent M. Golik, III
Rena G. Goss
Brian E. Graban
Susan E. Grathwohl
Richard L. Gray
Robert and Sheri Gray
Linda J. Greaf
Blaine and Rhonda Griffin
Teddy and Phyllis Gron
Roberta M. Gumbel
Suzanne and Richard Gunther
Samuel and Phyllis Guskin
Chun-Fang B. Hahn
Michelle K. Hahn
Catherine and John Hain
Hendrik and Bieneke Haitjema
Nagui and Pauline Halim
Robert E. Hallam
Kenneth and Judy Hamilton
Anthony S. Hansen
Andrew J. Hanson and Patricia L. Foster
Martha and Stephen Harris
Pierrette Harris
Robert and Emily Harrison
John B. Hartley and Paul W. Borg
Stephen R. Hartman
Jeff and Jeanette Hathaway
John H. Head
Clayton and Ellen Heath
W. Harvey Hegarty, Ph.D., and Connie
Hegarty
Rebecca Henry and Monte L.
Schwarzwalder
Daniel and Catherine Herdeman
F. Edward Herran, II and Martha
Dunne
David and Rachel Hertz
H. Allan and Helen Heuss
Allison T. Hewell
Leslie W. Hicken
Patricia L. Hicks
Harvey and Alison Hiebert
Victoria Hilkevitch
Ford D. Hill
John D. Hobson
Wendy W. Hodina
Richard and Lois Holl
Steven L. Holloway

Pamela and Jack Holt
Julian L. Hook
Lynn M. Hooker and David A. Reingold
Judith and Dennis Hopkinson
Gretchen G. Horlacher
Ray and Phyllis Horton
Dewey W. Howard
Patricia and Tom Howenstine
Robert B. Huber
Cindy and John Hughes
Ivan and Anne Hughes
Marcia A. Hughes
Gerald and Rena Humerickhouse
David F. Humm
Sally and Llewellyn Humphreys
Linda S. Hunt and Timothy M.
Morrison
Mary V. Hurwitz
Greg Imboden
Barbara A. Inzana
Stefanie H. Jacob and Scott K. Tisdell
Carole L. James
Charles and Laurie Jarrett
Glenn E. Jenne
Margaret T. Jenny and John T. Fearnside
Kathryn and Robert Jessup
Barbara and Ted Johnson
Edith Johnson and Jason Overall
Kathleen L. Johnson
Mark and Susan Johnson
Sidney K. Johnson
Hilda Jones
Kristin and Wayne Jones
Laura and Matthew Jones
Jason Judd and Amy Silver-Judd
Terri and Neil Kaback
Mike and Kimberly Kapps
Marilyn J. Kelsey
Stephanie and Eric Kendall
Walter and Joan Kerfoot
Martin W. Kettelhut
Melissa Kevoorkian and Jack Fields
Cheryl L. Keyes
Robert and Stephanie Keys
Myrna M. Killey
Kyle W. King
Jennifer M. Kirby and Liza M. Saracina
Earl D. Kirk
Christopher E. Klapheke
Brandon and Bethany Knight
Marilyn B. Knudsen
Peter V. Koenig and Mary E. Jamison
Wayne and Linda Koteles
George J. Kozacik
Rose Krakovitz
Kenneth and Renee Kudrak
Julie and Thomas Lacy
Judy and Larry Lafferty
Eric C. Lai and Grace Lok
Dodd and Myrna Lamberton
Thomas and Nancy Lancaster
Ronald and Cynthia Land
Beverly E. Landis and Alan R. Billingsley
Janet and Gary Langhorst
Arthur W. Larson
Richard T. Lathom
Joan B. Lauer
Julia K. Lawson
Randy L. Leazenby
Debra and Robert Lee
Marjorie and Robert Lee
Gregory Largent and Anna Leppert-Largent
Lesley and Mark Levin
Josephine M. Levine
Stuart F. Lewin
Joseph J. Lewis
Craig L. LiaBraaten

Ann and Scott Liberman
 Rita K. Lichtenberg
 Carolyn R. Lickerman
 Nancy H. Liley
 Jeffrey Lim
 Alexis E. Linnemeier
 Karen and William* Lion
 Peter G. Lorenzen
 Pamela and David Lowe
 Alma Brooks Lyle
 Joan I. Lynch
 Catherine Madsen
 Bill* and Ellie Mallory
 Anna Mamala
 Leslie and Joseph Manfreda
 Dr. Rochelle G. Mann
 Rudy T. Marozzi
 John B. Markert
 Lynne and Richard Marks
 Nancy G. Martin
 Jacquelyn E. Matava and Brett A. Richardson
 Joel and Sandra Mathias
 Kelli L. Matula
 Gina Matury
 Gary S. May and Susan E. Baker
 Philip and Elizabeth McClintock
 Thomas and Norma McComb
 Marie M. McCord
 Larry S. McKee
 Mary Jo McMillan
 Angela and Michael McNelis
 Marcia and Michael McNelley
 Sean M. McNelley
 Ted and Bess Megremis
 Katherine and Gerald Mehner
 Edith and Glenn Mellow
 Ralph and Shirley Melton
 Eva Mengelkoch
 Stephen and Judy Merren
 Rosemary G. Messick
 Polly Middleton
 Mary A. Miller
 Ronald and Joyce Miller
 Sylvia and James Miller
 Thomas J. Miller
 Susan Minard and Kay Yourist
 Victor G. Mishkevich
 Joseph T. Mitchell
 Marvin and Susan Mitchell
 Richard J. Mlynarski
 Rosalind E. Mohnsen
 Lorna L. Moir
 Edward Mongoven
 Hannah and Tom Moore
 Matthew T. Morey
 Holly and Douglas Morin
 Richard H. Motley
 Kathryn and Sam Morrison
 Haruko and Otis Murphy
 Sara and Allan Murphy
 Ann E. Murray and Michael Hurtubise
 Frank and Nancy Nagler
 Roxana Nagosky
 Allen L. Nahrwald
 Emile G. Naoumoff
 Daniel and Heather Narducci
 Eric M. Nestler
 Wanda and Bruno Nettl
 Gail C. Newmark
 Kathleen C. Nicely
 Evelyn M. Niemeyer
 Carol Kniebusch Noe
 David and Barbara Nordloh
 Margaret V. Norman
 Christopher and Christine Norris
 Marilyn F. Norris
 Kimberly and Scribner Ochsenschlager
 Gayle P. O'Day
 Wesley and Patricia Oglesby
 James Ognibene
 David and Diane O'Hagan
 Aoife W. O'Neill
 Patricia and Eric Orth
 Wendy P. Ostermeyer
 Russell L. Otte
 Mary A. Owings
 Aimee and Mitch Page
 Hyung-Sun Paik
 Janet R. Palfev
 Mara E. Parker and Andrew J. Cogbill
 Sandra B. Parker
 Peggy Paschall*
 Marilyn J. Patton
 Linda and David Pennebaker
 Ronald A. Pennington
 Alice and John Pierce
 Carol Pierce
 Labros E. Pilalis and Jessica Suchy-Pilalis
 Kelly Pitcher
 Lois S. Pless
 Raymond A. Polstra
 John C. Porter and Dominick DiOrto, III
 Belinda M. Potoma and Michael R. Fish
 Gregory L. Powell and Miriam McLeod Powell
 Robert and Patricia Powell
 Patricia and Charles Prause
 Richard and Mary Pretat
 Patricia and Thomas Price
 Angeline and Mike Protogere
 Mary Pulley
 Rod and Connie Radovanovic
 Barbara Randall
 Virginia Raphael
 Cheryl L. Rapp
 John A. Rathgeb and Alan Chadrijan
 James L. Reifinger, Jr.
 Kathleen S. Rezac
 Carolyn J. Rice
 Bill and Dorothy Richards
 Brian and Deborah Richardson
 Mary and Charles Richardson
 Mary and Jim Rickert
 Susan E. Rishik
 Alice E. Robbins
 Samuel and Valerie Roberts
 David and Orli Robertson
 Emma Robinson
 Donna and Edward Ronco
 Laura D. Rorick
 Richard J. Rose
 Gail C. Rothrock and Charles L. Trozzo
 Evan J. Rothstein
 Bruce and Judith Ruben
 George A. Rubin
 Judith C. Rudiakov
 Gerald J. Rudman
 Kathleen C. Ruesink
 Todd A. Ruppert
 Edward and Kimberly Ryan
 Ann and David Samuelson
 Michael W. Sanders and Susan Howe
 Linda and Alan Sandlin
 Stephanie Sant'Ambrogio and Gary Albright
 V. Gayle Sarber
 John and Donna Sasse
 James and Helen Sauer
 Laura Q. Savage
 Susan Savastuk and Glorianne Leck
 Harry and Patricia Sax
 Norin F. Saxe
 Vicki J. Schaeffer
 Marianne C. Schapiro
 Andrew R. Schemm and Andrew G. Myers
 Jennifer and Bradley Schulz
 Kimberly A. Schwartz
 Susanne Schwiibs
 Perry and Lisa Scott
 John A. Seest
 Mary K. Seidholz
 Nancy and Stephen Shane
 John G. Shanks
 Robert and Irma Sheon
 Larry and Debra Sherer
 Richard and Denise Shockley
 Thomas and Donna Shriner
 Janet A. Shupe
 Paul H. Sievers
 Samuel and Theresa Sievers
 Helen and Edward Sing
 Alan and Jacqueline Singleton
 Kevin M. Sipe
 Daniel C. Smith and Jonlee Andrews
 David K. Smith and Marie E. Libal-Smith
 Estus Smith
 John and Juel Smith
 Lee Ann Smith and Mark C. Webb
 Louise and Russ Smith
 Melissa and Joshua Smith
 Lucille Snell
 Steve and Mary T. Snider
 Susan E. Snortland
 Jill M. Snyder
 Sandra L. Snyder
 Alan B. and Kathryn "Kitch" Somers
 Renee and Robert Southworth
 James and Carolyn Sowinski
 Paul V. Spade
 Diane J. Spofford
 Darell and Susan Stachelski
 David and Alice Starkey
 Eric and Shannon Starks
 Holly and Michael Stauffer
 Theresa A. Steele
 Vera S. Stegmann
 P. Bruce Stephenson and Maria K. Schmidt
 Malcolm and Ellen Stern
 Rozella and M. Dee Stewart
 Charles F. Stokes, Jr.
 James L. Strause
 Eric and Etsuko Strohecker
 Bill and Gayle Stuebe
 Takao and Nobuko Suzuki
 Tom and Cynthia Swihart
 Leaetta and Rick Taflinger
 Ellen C. Tamura
 Jeffrey R. Tanski
 J. Patrick Tatum
 Sandra and Lawrence Tavel
 Sue and Charles Tavel
 Joyce A. Taylor
 Kathleen Taylor
 Charlotte H. Templin
 Dale R. Terry
 Theodore G. Thevaos
 William F. Thompson
 Charles Thompson
 Roderick Tidd and Lisa M. Scrivani-Tidd
 Diana and Joseph Tompa
 Jonathan N. Towne and Rebecca J. Noreen
 Thomas N. Toyama
 Catherine L. Treen
 Stephanie G. Tretick
 Thomas and Rhonda Trippel
 Tamara B. Tritschuh
 Cheryl A. Tschanz and William L. Newkirk
 LCDR Jeffrey Stewart Tunis
 Janet E. Tupper

Alice and John Tweedle
Donald L. Uter
Brenda and Keith Vail
Dianne Vars
Matthew and Heather Vaughn
Matthew and Therese Veldman
Michael and Donna Venturini
William and Sandra Volk
Elaine Wagner
Barbara J. Waite
Judith Walcoff
George L. Walker and Carolyn M.
Lipson-Walker
Jeffrey and Debra Walker
Ruth H. Walker
Dennis and Julie Walsh

Elizabeth and Timothy Wappes
Mary A. Watt and William C. Strieder
Thomas J. Weakley
Michelle D. Webb
Barbara C. Weber
Pamela A. Weest-Carrasco
Fran and Gene* Weinberg
Kay and Ewing Werlein
Constance E. West
Mark and Jan Wheeler
Philip and Shandon Whistler
Anthony and Teresa White
David E. Wick
G. C. Wilhoit, Jr.
Ross B. Wilkerson
Richard D. and G. Sue Williams

Dolores Wilson
Lawrence A. Wilson
James C. Wimbush and Kerry L. West
Jim and Ruth Witten
Michele and Gary Wolff
Joyce M. Woltman
Blue Butterfly Woman
Sara and Tom Wood
Margaret and John Woodcock
Lisa and John Wrasse
Karen and Danny Wright
Jamie and Rick Yemm
Jeffery P. Zaring
Joan and David Zaub
Georgia E. Zeichner
Conrad and Debora Zimmermann

Corporations and Foundations

————— \$50,000 and Up —————

Allen Whitehill Clowes Charitable
Foundation, Inc.

Christel DeHaan Family Foundation
Georgina Joshi Foundation, Inc.

Summer Star Foundation for Nature, Art and
Humanity, Inc.

————— \$10,000 - \$49,999 —————

Central Indiana Community Foundation, Inc.
Fidelity Charitable Gift Fund

Harry Kraus Survivor Trust
Old National Wealth Management

Smithville Communications, Inc.
Sweetwater Sound, Inc.

————— \$1,000 - \$9,999 —————

Aikman Foundation, Inc.
Avedis Zildjian Company
Avery & Greig, LLP
Bank of America Foundation
Benevity Social Ventures, Inc.
Bloomington Surgical Associates
C. Richard and Verna Louise Johnson
Foundation, Inc.
Camerata, Inc.
Chevron Phillips Chemical Company LLC
Community Foundation of Bloomington
and Monroe County
Eli Lilly & Company

Five Star Quality Care, Inc.
Greater Horizons
The Harvey Phillips Foundation, Inc.
J K Consulting
Joshua Bell, Inc.
Kalamazoo Community Foundation
Kelben Foundation
Le Luth Doré
Lilly Endowment, Inc.
Meadowood Retirement Community
Morgan Stanley Global Impact Funding
Trust, Inc.
National Christian Foundation Chicago

Opera Illinois League
Paulsen Family Foundation
Prescott Famyle LLC
Robert Carwithen Music Foundation
Saint Paul Foundation
Schwab Charitable Fund
Shilling Sales, Inc.
Theodore W. Batterman Family
Foundation, Inc.
Vanguard Charitable Endowment Program

Annual Giving Circles

The Indiana University Jacobs School of Music Annual Giving Circles include individuals dedicated to making a difference in the cultural life of the university. These unrestricted gifts of opportunity capital support the areas of greatest need, including financial aid, faculty research, academic opportunities, and visiting artists.

Dean's Circle

Visionary Members

———— \$10,000 and Up ————

Jack and Pam Boggs Burks
Frank C. Graves

David Jacobs
Delano L. Newkirk and Luzetta A. Newkirk

Strategic Members

———— \$5,000 - \$9,999 ————

William and Marion Crawford
Stephany A. Dunfee

Sue Ellen Scheppeke and Nicholas M. Barbaro
Jeannette J. Segel

John and Jennifer Sejdinaj

Supporting Members

———— \$1,000 - \$4,999 ————

Linda A. Baker
Robert Barker and Patsy Fell-Barker
Bill and Anita Cast
Mark and Katy Cobb
Patricia J. Corbin*
Carol and John Cornwell
Melissa and Eric Dickson
Lois and Nile Dusdicker
Mary Anne and Edward Fox
Ann Harrison
J. Stanley Hillis, M.D., and Alice G. Hillis
James R. Hodge
Thomas Kasdorf
Vicki and Thomas King
John and Nancy Korzec
Dr. Monika H. and Dr. Peter H. Kroener

James W. and Evelyn Whaley LaFollette
Scott Latzky and Teresa Weber
Robert F. LeBien and Sara J. LeBien*
Stine M. Levy
Earl F. Luetzelschwab and Deborah I. Burkhardt
P. A. Mack, Jr.
David E. McNeel
Dr. John M. Miller* and Geraldine Miller
Jim and Jackie Morris
John T. and Barbara M. Morris
Lawrence Myers, Jr.
Carol S. Nole
Joan C. Olcott
Margaret A. Piety
Gary and Christine Potter

Andrew Recinos and Peggy Cooper
Al and Lynn Reichle
Jerry and Cynthia Robinson
Richard A. Russell and Cynthia Bydlinski
Randy W. Schekman
Richard Searles
Christine J. Shamborsky
Nathan and Jessica Short
Jefferson and Mary Shreve
W. Craig Spence
Jennifer and Richard Stiles
Patricia J. Stiles
Paula W. Sunderman
Randall L. Tobias and Deborah F. Tobias

Artist's Circle

———— \$500 - \$999 ————

Niel and Donna Armstrong
David Y. Bannard and Mary Ashley
Charles and Gladys Bartholomew
Franklin and Linda Bengtson
Karen and Arthur Bortolini
Mary and Montgomery Brown
James and Carol Clauser
Ingrid B. Faber and Robin M. Lasek
Thomas E. Gerber

Arlene Goter
William and Karol Hope
Carol R. Kelly
Virginia and Frederick Krauss
James D. McLuckie
Scott and Katherine Riley
Bruce E. Ronkin and Janet L. Zipes
Edward S. Selby
Michael D. Shumate

Curtis R. and Judy Chapline Simic
Edwin L. Simpson
James B. Sinclair and Sylvia Van Sinderen
Robert L. Smith and Janice L. Lesniak
Ronald L. Sparks
David L. Wicker
Carl Wiuff, Jr.

———— \$250 - \$499 ————

Samuel and Janet Baltzer
Mark K. Bear
John N. Burrows
Richard K. Cook and Roger Roe
Katherine R. Covington
Barbara A. Dell
Mary Lynn and Scott Denne
Clarence H. and Judith Doninger
Danny and Jeanette Duncan
Mark and Jennifer Famous
Ross A. Gombiner and Anita C. Lee

Mary Ann Hart
James S. Humphrey, Jr.
Russell L. Jones
Marilyn J. Keiser
Jillian L. Kinzie and Joseph Throckmorton
Diana Dehart Lehner
Jon and Susan Lewis
Lisa K. Marum
John M. Maryn
Sallie Liesmann Matthews and Jim K. Matthews

Jerry W. and Phyllis McCullough
Beverly A. McGahey
Kathleen and Emanuel Mickel
Linda L. Moot and Andrew P. Levin
Nobuyo Nishizaka
Anne and Hugh O'Donnell
Herbert E. Parks
Jorgen and Martha Rasmussen
David and Leanna Renfro
Barbara and Gwyn Richards
Ilona K. Richey

Paul and Barbara Ristau
Linda J. Rosenthal
Christopher and Janet Schwabe
Sarah and Danny Sergesketter

Varda Shamban
Nina and Joseph Steg
John and Tamyra Verheul
Alan and Elizabeth Whaley

E. G. and Sharon White
Jim and Wilma* Wilson
Donna and Richard Wolf

— \$100 - \$249 —

Paul T. Abrinko and Monika Eckfield
Shirley T. Aliferis and Cary Passeroff
Margaret and Charles Athey
Judith A. Auer and George M. Lawrence
James and Mary Babb
Elizabeth Baker and Richard R. Pugh
Pamela Pfeifer Banks
Patricia W. Barrett
Robert R. Bartalot
Susan D. Bartlett
Sue A. Beaty
Jean C. Beckman and Helen L. Templeton
Audrone M. Bentham
Olesia and Andrew Bihun
Cheryl A. Bintz
David and Judy Blackwell
Ronald and Regina Blais
Gayle and Heinz Blankenburg
Michael and Pamela Bobb
Ruth and Christopher Borman
Elizabeth M. Brannon
Barbara and Edward Bredemeier
James and Anne Bright
Laurie Brown and Daniel Carroll
Lawrence W. Browne
Stanley R. Brubaker
William R. Buck
Jane Bunnell and Marc Embree
Shirley Y. Burger
Doris J. Burton
V. Barbara Bush
Margaret R. Buttermore
Vivian Campbell and Robert L. Jones
Joseph R. Car
Thomas and Linda Castaldi
Susan and Robert Cave
Harriet R. Chase
Gayle and Robert Chesebro
Virginia B. Coats
Richard and Lynn Cohee
Robert and Marcia Coleman
Michael and Pamela Colwell
Nora B. Courier
Steven and Sandy Courtney
Ernest and Roxanna Crawford
James and Sue Crisman
Cheryl and Bradley Cunningham
Michael G. Cunningham
Eugene B. Daniels, Jr.
Gerald and Janet Danielson
Conrad and Susan De Jong
Imelda Delgado
Lisa C. DeLuca
Patrick and Karen Dessent
Kim and Dianne Diefenderfer
Barbara and Richard Domek
Alan and Juliet Duncanson
Joseph E. Elliott
Michael J. Ellis
Stanley and Pamela Engle
Deborah and Jeffrey Ewald
Suzanne and John Farbstein

Harriet and William Fierman
Mary Ellen Fine
Constance C. Ford
Bruce and Betty Fowler
Sean F. Gabriel
Robert J. Giesting
Rena G. Goss
Robert and Sheri Gray
Teddy and Phyllis Gron
Roberta M. Gumbel
Chun-Fang B. Hahn
Catherine and John Hain
Robert E. Hallam
Martha and Stephen Harris
Clayton and Ellen Heath
W. Harvey Hegarty, Ph.D., and Connie
Hegarty
Rebecca Henry and Monte L.
Schwarzwalder
Allison T. Hewell
Judith and Dennis Hopkinson
Jeffrey and Lesa Huber
Ivan and Anne Hughes
David F. Hummons
Diane S. Humphrey
Sally and Llewellyn Humphreys
Glenn E. Jenne
Kathryn and Robert Jessup
Walter and Joan Kerfoot
Martin W. Kettelhut
Cheryl L. Keyes
Myrna M. Killey
Marilyn B. Knudsen
Thomas and Nancy Lancaster
Richard T. Lathom
Debra and Robert Lee
Marie T. Lutz
Joan I. Lynch
Rudy T. Marcozzi
Lynne and Richard Marks
Joel and Sandra Mathias
Andrea Matthias
Gary S. May and Susan E. Baker
Philip and Elizabeth McClintock
Winnifred L. McGinnis
Ellen L. McGlothlin Priest
Mary Jo McMillan
Edith and Glenn Mellow
Ralph and Shirley Melton
Stephen and Judy Merren
Mary A. Miller
Joseph T. Mitchell
Rosalind E. Mohnsen
Ann E. Murray and Michael Hurtubise
Emile G. Naoumoff
Eric M. Nestler
Kathleen C. Nicely
Margaret V. Norman
James Ognibene
David and Diane O'Hagan
Patricia and Eric Orth
Mary A. Owings

Mara E. Parker and Andrew J. Cogbil
Peggy Paschall*
Labros E. Pilalis and Jessica Suchy-Pilalis
John C. Porter and Dominick Diorio, III
Gregory L. Powell and Miriam McLeod
Powell
Patricia and Thomas Price
James L. Reifinger, Jr.
Phyllis E. Relyea
Carolyn J. Rice
Donna and Edward Ronco
Bruce and Judith Ruben
George A. Rubin
Judith C. Rudiakov
Ann and David Samuelson
Stephanie Sant'Ambrogio and Gary
Albright
Laura Q. Savage
Norin F. Saxe
Marianne C. Schapiro
Perry and Lisa Scott
Mary K. Seidholz
John and Lorna Seward
Nancy and Stephen Shane
Thomas and Donna Shriner
Daniel C. Smith and Jonlee Andrews
Estus Smith
John and Juel Smith
Steve and Mary T. Snider
John L. Snyder, Jr.
Darell and Susan Stachelski
Holly and Michael Stauffer
Vera S. Stegmann
P. Bruce Stephenson and Maria K. Schmidt
James L. Strause
Joyce A. Taylor
Charles Thompson
Diana and Joseph Tompa
Cheryl A. Tschanz and William L. Newkirk
Alice and John Tweedle
Brenda and Keith Vail
Dianne Vars
Matthew and Heather Vaughn
Michael and Donna Venturini
William and Sandra Volk
Elaine Wagner
Barbara J. Waite
Jeffrey and Debra Walker
Ruth H. Walker
Thomas J. Weakley
Rebecca and Wayne Weaver
Barbara C. Weber
Pamela A. West-Carrasco
Mark and Jan Wheeler
Dolores Wilson
Lawrence A. Wilson
James C. Wimbush and Kerry L. West
Teresa and Peter Wolf
Blue Butterfly Woman
Margaret and John Woodcock
Earl S. Woodworth
Karen and Danny Wright

Leadership Circle

Members of the Leadership Circle have contributed lifetime gifts of \$100,000 or more to the Indiana University Jacobs School of Music. We gratefully acknowledge the following donors, whose generosity helps the school reach new heights and build a sound financial framework for the future.

Over \$10,000,000

The Estate of Barbara M. Jacobs

David Jacobs

Lilly Endowment, Inc.

Over \$1,000,000

Gary J. and Kathy Z. Anderson
The Estate of Robert L. Carpenter
Cook Incorporated
Dorothy Richard Starling Foundation
The Estate of Luba Dubinsky

The Estate of Juanita M. Evans
Georgina Joshi Foundation, Inc.
Jack M. Gill, Ph.D., and Linda Challis Gill
Jack* and Dora Hamlin
The Joshi Family

Krannert Charitable Trust
The Estate of Juana Mendel
The Estate of Clara L. Northhacksberger
The Estate of Robert O'Hearn
The Estate of Anne and Paul Plummer

\$500,000 - \$999,999

Ann & Gordon Getty Foundation
Arthur R Metz Foundation
The Estate of Ione B. Auer
Alexander S. Bernstein
Jamie Bernstein
Nina Bernstein Simmons
The Estate of George A. Bilque, Jr.
Jack and Pam Boggs Burks
Mr. and Mrs. Carl A. and Marcy L. Cook
Gayle T. Cook
The DBJ Foundation

The Estate of Frederick G. Freeburne,
Ph.D., and Mary M. Freeburne
The Estate of W. W. Gasser, Jr. and Mary
Kratz Gasser
Gordon and Ann Getty
Wade C.* and Ann S. Harrison
The Estate of Eva M. Heinitz
Thomas Kasdorf
Sandy Littlefield
Shalin C. Liu

F. Murray Robinson, C.P.A., and W. Sue
Robinson
Richard* and Barbara Schilling
The Estate of Eva Sebok
Summer Star Foundation for Nature, Art,
and Humanity, Inc.
The Estate of Ruth E. Thompson
The Estate of Herman B Wells
Mary H. Wennerstrom and Leonard M.
Phillips*

\$250,000 - \$499,999

W. Jameson Aebersold, D.M. and Sara A.
Aebersold
The Estate of Wilfred C. Bain
Olimpia F. Barbera
The Estate of Angeline M. Battista
Beatrice P. Delany Charitable Trust
The Estate of Sylvia F. Budd
The Estate of Marvin Carmack, Ph.D.,
and Joan M. Carmack
Christel DeHaan
Christel DeHaan Family Foundation
The Estate of Alvin M. Ehret, Jr.
The Estate of Lucille de Espinosa
The Estate of Mr. Richard E. Ford
The Estate of Emma. B Horn
Thomas Pegg and Sherry Hustad
IBM Global Services

Irwin-Sweeney-Miller Foundation
The Estate of David H. Jacobs
The Estate of Harold R. Janitz
Korea Foundation
Dr. Monika H. and Dr. Peter H. Kroener
Dr. Se Ung Lee
The Estate of Jeanette C. Marchant
The Estate of Nina Neal
Presser Foundation
The Estate of Elizabeth C. Raney and
Ben B. Raney, Jr., M.D.
Joy and Rudolph* Rasin
The Estate of Naomi Ritter
William C. Rorick
The Estate of Virginia and Morton L.
Schmucker
The Estate of Lee E. Schroeder

Scott C. and Kay Schurz
The Estate of Maidee H Seward
Bren Simon
Cynthia L. Stewart Simon and William E.
Simon, Jr.
The Cynthia L. & William E. Simon, Jr.
Foundation
David and Jacqueline Simon
Deborah J. Simon
Herbert and Porntip Simon
The Estate of Melvin Simon
The Estate of Samuel W. Siurua
Paul and Cynthia Simon Skjodt
Marianne W. Tobias
Robert J. Waller* and Linda Bow
The Estate of John D. Winters

\$100,000 - \$249,999

Allen Whitehill Clowes Charitable
Foundation, Inc.
The Estate of Ursula Apel
The Estate of Fred and Martha Arto
Artur Balsam Foundation
The Estate of Robert D. Aungst
Barbro Osher Pro Suecia Foundation
Robert Barker and Patsy Fell-Barker
Cynthia and Bennet Brabson
Brabson Library and Education
Foundation
The Estate of Jean R. Branch
The Estate of Mildred J. Brannon
The Estate of Frances. A Brockman
Carol V. Brown
J. Peter Burkholder, Ph.D., and P. Douglas
McKinney
Susan Cartland-Bode and Henry J. Bode
The Estate of Aileen Chitwood

Richard and Lynn Cohee
The Estate of James O. Cole and Maria A.
Cole
Cole & Kate Porter Memorial Grad
Fellow in Music* Trust
Jean and Doris Creek
The Estate of Mavis M. Crow
The Estate of Susie J. Dewey
The Estate of M. Patricia Doyle
The Estate of William H. Earles and
Patricia A. Earles
The Estate of Robert A. Edwards
Marianne V. Felton, Ph.D.
Fidelity Charitable Gift Fund
Ford Meter Box Company, Inc.
The Estate of Thomas L. Gentry
Georgia Wash Holbeck Living Trust
Paul and Ellen Gignilliat
The Estate of Monroe A. Gilbert, Ed.D.

The Estate of Theodore C. Grams
The Estate of Marjorie Gravit
The Estate of David C. Hall
Steve and Jo Ellen Ham
The Estate of Margaret H. Hamlin
Robert and Sandra Harrison
Harrison Steel Castings Company
The Estate of Jascha Heifetz
Elwood H. Hillis, LL.D.
Jeffrey Haynes Hillis
IU Medical Group Foundation
Joan & Marvin Carmack Foundation
Ruth E. Johnson*
Ted W. Jones
The Estate of Eleanor Knapik
The Estate of Eugene Knapik
Robert E. Lebien and Sara J. LeBien*
George William Little, Jr.* and B. Bailey Little
P. A. Mack, Jr.

David and Neill Marriott
Susann H. McDonald
The Estate of Margaret E. Miller
The Estate of Elisabeth P. Myers
The Estate of Jean P. Nay
Delano L. Newkirk and Luzetta A.
Newkirk
The Estate of Richard J. Luszorn
Penn Asset Equity LLC
The Estate of Charlotte Reeves
The Estate of Dagmar K. Riley

Edward Runden and Linda K. Runden
Stephen L. and Margaret Cole Russell
Richard and Rosemary Schweer
Fred* and Arline Simon
The Estate of Martha K. Siurua
Smithville Telephone Company, Inc.
The Dr. John Winston Spanier Family
Sweetwater Sound, Inc.
The Estate of Maxine M. Talbot
Technicolor USA, Inc.

Theodore W. Batterman Family
Foundation, Inc.
The Estate of Alice C. Thompson
The Estate of Mary C. Tilton
Kenneth C. Whitener, Jr.
William D. Rhodes Foundation
Laura S. Youens-Wexler, Ph.D.* and
Richard M. Wexler
Deborah Zygmont, M.D., F.A.C.P.
Loretta Zygmont

The Legacy Society

The Legacy Society at the Indiana University Jacobs School of Music honors the following individuals, who have included the Jacobs School as a beneficiary under their wills, trusts, life insurance policies, retirement plans, and other estate-planning arrangements.

David* and Ruth Albright
Mr. Richard L. Alden and Ms. Ann T.
Alden
Gary J. and Kathy Z. Anderson
John and Adelia Anderson
Kenneth and Georgina Aronoff
Peggy K. Bachman
Dennis and Virginia Bamber
J. William Baus
Mark and Ann* Bear
Christa-Maria Beardsley
Michael E. Bent
Neil A.* and Dixie D. Bjurstrom
Julian M. Blumenthal
Richard and Mary Bradford
W. Michael Brittenback and William
Meezan*
Marjorie Buell
Pamela S. Buell
Gerald and Elizabeth* Calkins
Sarah Clevenger
Eileen Cline
Virginia F. Cole
Cynthia McAllister Crago and Don H.
Crago*
Jack and Claire Cruse
D. Michael Donathan, Ph.D.
Florence L. Doswell
Stephany A. Dunfee
Keith E. Eby
David and Arlene Effron
Sandra Elkins
Michael J. Ellis
Anne Epperson
Phil Evans and Herbert Kuebler
Michael J. Finton
Philip* and Debra Ford
Marcella and Donald* Gercken
Paul and Ellen Gignilliat
Glen G. Graber
Ken* and Kathleen Grandstaff
Jonathan L. Gripe
Larry and Barbara Hall

Jack* and Dora Hamlin
Charles Handelman
James Richard Hasler
David and Mildred Hennessy
Daniel F. Hewins
E. Jane Hewitt and Richard H. Small
Jeffrey Haynes Hillis
David M. Holcenberg
Julian L. Hook
William T. and Kathryn* Hopkins
David E. Huggins
Harriet M. Ivey
Ted W. Jones
Myrna M. Killey
Meredith K. Kirkpatrick
Christopher E. Klapheke
Martha R. Klemm
Marilyn Bone Kloss
Harlan L. Lewis and Doris F. Wittenburg
Ray* and Lynn Lewis
Nancy Liley
Ann and Richard* Lilly
George William Little, Jr.* and B. Bailey
Little
Leslie and Joseph Manfredo
Charles J. Marlatt
Richard and Susan Marvin
Susan G. McCray
Douglas and Jean McLain
James F. Mellichamp
Sonna Ehrlich Merk and Don Merk
Robert A. Mix
Cyndi Dewees Nelson and Dale Nelson
Delano L. Newkirk and Luzetta A.
Newkirk
Fred Opie and Melanie S. Spewock
John and Margaret Parke
James J. Pellerite
Jean Robinson Peters
Jack W. Porter
Presbyterian Church (USA) Foundation
Nancy Gray Puckett
Stanley E. Ransom

Robert G. Reed, M.D., and Carlene L.
Reed
Mary Anne Rees
Al and Lynn Reichle
Barbara and Gwyn Richards
Ilona Richey
Murray and Sue Robinson
John W.* and Par Ryan
Barbara Kinsey Sable, D.M. and Arthur J.
Sable*
Roy* and Mary* Samuels
Vicki J. Schaeffer
William C. Schell* and Maria Michelewski
Schell
Jeannette J. Segel
John and Lorna Seward
Karen Shaw*
W. Richard Shindle, Ph.D.
Curtis R. and Judy Chapline Simic
Catherine A. Smith*
George P. Smith, II
Steve and Mary T. Snider
Craig A. Stewart and Marion Krefeldt
William D. and Elizabeth Kiser Strauss
Mark A. Sudeith
Robert D. Sullivan
R. Michael Suttle and Carolyn C. Suttle
Hans* and Alice M. Tischler
LCDR Jeffrey Stewart Tunis
Henry and Celicia Upper
Robert J. Waller* and Linda Bow
Patrice Madura Ward-Steinman, D.M.E.
Charles and Kenda* Webb
Michael D. Weiss
Mary H. Wennerstrom and Leonard M.
Phillips*
Robert E.* and Patricia L. Williams
Michael Williamson and Kathy Weston
Nancy C. Zacharczyk
Loretta Zygmont

*Deceased



SOCIETY OF THE
FRIENDS OF MUSIC

Friends of Music Honor Roll

Fiscal Year 2018-19

The mission of the Society of the Friends of Music is to raise scholarship funds for deserving, talented students at the Indiana University Jacobs School of Music. The society was established in 1964 by a small group led by Herman B Wells and Wilfred C. Bain. We are pleased to acknowledge outright gifts made between July 1, 2018, and June 30, 2019.

Friends of Music

———— \$10,000 and Above ————

W. Leland Butler and Helen M. Butler
Steve and Jo Ellen Ham

Larry and Celeste Hurst

Joanne E. Passet, Ph.D., and Deborah S.
Wehman, D.P.M.

———— \$5,000 - \$9,999 ————

Robert Barker and Patsy Fell-Barker
Joshua D. Bell

Jill and Shaun Byrnes
Perry J. Maul

Herman B Wells Circle

Gold

———— \$2,500 - \$4,999 ————

Diana and Rodger Alexander
Eleanor J. Byrnes*
Jim and Laura Byrnes
Mary Alice Cox and James Koch
Carolyn A. Deodene

Phil Evans and Herbert Kuebler
Anne T. Fraker
Harlan L. Lewis and Doris F. Wittenburg
Julia and Charles McClary

President Michael A. McRobbie and First
Lady Laurie Burns McRobbie
Karen Shaw*
Ellen Strommen

Silver

———— \$1,000 - \$2,499 ————

Ruth Albright
Susan and James Alling
Teresa D. Ayres and John D. Ayres,
M.D., J.D.
Mark K. Bear
David and Paula Bonner
Cathleen Cameron
Bill and Anita Cast
Edward S. Clark
Jean and Doris Creek
Frank Eberle
Harvey and Phyllis Feigenbaum
Edward and Mary Anne Fox

Robert R. Greig
Richard T. Ham and Allison Stires
Robert and Ann Harman
Peter P. Jacobi
Timothy W. Kittleson and Michael C.
Donaldson
Susan M. Klein and Robert Agranoff
Dr. Monika H. and Dr. Peter H. Kroener
Joe and Sandy Morrow
Cyndi Dewees Nelson and Dale Nelson
Delano L. Newkirk and Luzetta A.
Newkirk
Louise and Leonard* Newman

Edward and Patricia O'Day
Stephen R. Pock and David Blumberg
John and Joyce Poling
Randy W. Schekman
Judith L. Schroeder
Phyllis C. Schwitzer
Curtis R. and Judy Chapline Simic
Gregg and Judy Summerville
Rebecca M. Tichenor
J. William Whitaker, M.D., and Joan M.
Whitaker
Mark Wiedenmayer

Dean Wilfred C. Bain Circle

Patrons

— \$500 - \$999 —

James and Ruth Allen
Shirley Bell
Jack and Pam Boggs Burks
Charles and Helen Coghlan
Stephen A. Ehrlich
Alan R. Goldhammer
Linda F. Gregory
Rita B. Grunwald
Robert and Martha Gutmann
E. Jane Hewitt and Richard H. Small
Margaret and George Holden
Dr.* and Mrs. Frank N. Hrisomalos
Sarah J. Hughes and A. James Barnes

Diane S. Humphrey
Martin and Linda Kaplan
Marilyn J. Keiser
Vicki and Thomas King
George and Cathy Korinek
Ronald Kovener
Yvonne Y. Lai and Kenneth P. Mackie
Sujal and Elizabeth Patel
Carol and Wade Peacock
John and Lislott Richardson
David Sabbagh
Scott C. and Kay Schurz
Rebecca and John Shockley

Janet S. Smith
Laird and Nancy Smith
Blount and Anna Stewart
Bruce and Shannon Storm
Henry and Celicia Upper
Elizabeth R. Vance-Rudolph
Martha F. Wailes
Mary H. Wennerstrom Phillips
Patricia L. Williams
Galen Wood
Steve and Judy Young

Sustainers

— \$300 - \$499 —

Ruth O. Boshkoff
Gerald J. Calkins
James and Carol Campbell
Gerald and Beatrice Carlyss
David Crandall and Saul A. Blanco
Rodriguez
Carol J. Dilks
Lee and Eleanor Dodge
Sterling and Melinda Doster
Sharon and John Downey
David and Arlene Effron
Elaine and Philip Emmi
Michael and Patricia Gleeson
Kenneth and Janet Harker
Steven L. Hendricks

Ernest N. Hite and Joan E. Pauls
Susanne and Herbert Hochberg
Jeffrey and Lesa Huber
Anita Louise Jerger
Thomas and Mary Kendrick
Kate Kroll
Aylet E. Lindenstrauss and Michael J.
Larsen
P. A. Mack, Jr.
Judith A. Mahy-Shiffrin and Richard M.
Shiffrin
Howard D. Mehlinger
Gerald L. and Anne Klock Moss
Patricia and John Mulholland
Harold and Denise Ogren

Patricia Pizzo
Ruth and Robert Salek
Mark and Anne Sauter
Marilyn F. Schultz
John and Lorna Seward
Linda Strommen
Lewis H. Strouse
Linda J. Tucker
Kenneth and Marcia Vanderlinden
Rebecca and Wayne Weaver
Carl R. Weinberg
Roger and Barbara Wesby
Carol A. Wise
Donna and Richard Wolf

Donors

— \$100 - \$299 —

David and Melanie Alpers
Paula J. Amrod
Evelyn and Richard Anderson
Carolyn A. Bailey
Donna M. Baiocchi
Mark J. Baker
W. Claude and Susan Baker
Susan D. Bartlett
David and Ingrid Beery
Elizabeth and Bruce Bennett
Ron and Mary Ann Bennett
Ernest Bernhardt-Kabisch
Peter and Nancy Boerner
Jaclyn and Bill Brizzard
Malcolm H. Brown
Derek and Marilyn Burleson
Jason J. Butera
William P. Butz
Beatrice H. Cahn
June M. Calkins and Emily J. Livant
Barbara J. Carlson
Carroll B. Cecil and Virginia Long-Cecil
George and June Chalou
Joyce E. Claffin
Karen-Cherie Cogane and Stephen Orel
Donald and Shirley Colglazier
Jean L. Cook
Samuel and Susan Crowl
J. Robert Cutter
Jeffrey L. Davidson and Pamela Jones
Davidson

Charles H. Davis, Ph.D., and Debora
Shaw, Ph.D.
Lawrence L. Davis
Samuel J. Davis, Jr.
Susan J. Devito
Deborah Divan
Amy R. Dorfman
Paul T. Dove
Beth and John Drewes
James Dukles, Jr.
Joseph J. Dukles, Sr.
Linda, Diane, Christine, and Amy
Dukles
Marc R. Dukles
Sarah J. Dunn and J. Michael Dunn
Michael J. Ellis
Joe and Gloria Emerson
Mary and Herman Emmert
Dorothy and David Evans
Deanie and Robert* Ferguson
Richard and Susan Ferguson
James and Evelyn Fisher
Donald and Sandra Freund
Bernard Frischer and Jane W. Crawford
Mauricio Fuks and Violaine Gabriel-Fuks
Sharon and Norman Funk
Bernardino and Caterina Ghetti
Kathy and Robin Gilbert-O'Neil
Elizabeth and Robert Glassey
Constance Cook Glen and James Glen
Vincent M. Golik, III
Sylvia and Harold Gortner

Richard L. Gray
Suzanne and Richard Gunther
Samuel and Phyllis Guskin
Hendrik and Bieneke Haitjema
Nagui and Pauline Halim
Kenneth and Judy Hamilton
Andrew J. Hanson and Patricia L. Foster
Pierrette Harris
Robert and Emily Harrison
James Richard Hasler
Lenore S. Hatfield
Jeff and Jeanette Hathaway
Daniel and Catherine Herdemann
David and Rachel Hertz
H. Allan and Helen Heuss
Victoria Hilkevitch
John D. Hobson
Wendy W. Hodina
Rona Hokanson
Richard and Lois Holl
Linda S. Hunt and Timothy M. Morrison
Carole L. James
Margaret T. Jenny and John T. Fearnside
Margaret and Donald Jones
Marilyn J. Kelsey
Daniel B. Keough
Earl D. Kirk
Peter V. Koenig and Mary E. Jamison
Lee A. Kohlmeier
Wayne and Linda Koreles
Rose Krakovitz
Eric C. Lai and Grace Lok

Ronald and Cynthia Land
Joan B. Lauer
Julia K. Lawson
Lesley and Mark Levin
Josephine M. Levine
Craig L. LiaBraaten
Rita K. Lichtenberg
Carolyn R. Lickerman
Nancy H. Liley
Jeffrey Lim
Peter G. Lorenzen
Pamela Williamson Lowe and David C.
Lowe
Bill* and Ellie Mallory
Dr. Rochelle G. Mann
John B. Markert
Nancy G. Martin
Andrea Matthias
James L. McClay
Rosemary G. Messick
Dr. John M. Miller* and Geraldine Miller
Ronald and Joyce Miller
Sylvia and James Miller
Rosalind E. Mohnsen
Hannah and Tom Moore
Matthew T. Morey
Frank and Nancy Nagler
Roxana Nagosky
Daniel and Heather Narducci
Evelyn M. Niemeyer
David and Barbara Nordloh
Marilyn F. Norris

Kimberly and Scribner Ochsenschlager
Wesley and Patricia Oglesby
David and Diane O'Hagan
Joan C. Oleott
Aoife W. O'Neill
Linda and David Pennebaker
Charles and Linda Pickle
Carol Pierce
Lois S. Pless
Raymond A. Polstra
Robert and Patricia Powell
Darlene and Stephen Pratt
Barbara Randall
Virginia Raphael
Phyllis E. Relyea
Kenneth L. Renkens and Debra L.
Lay-Renkens
Barbara and Gwyn Richards
Bill and Dorothy Richards
Mary and James Rickert
Richard J. Rose
Gail C. Rothrock and Charles L. Trozzo
Kathleen C. Ruesink
James and Helen Sauer
Vicki J. Schaeffer
Kimberly A. Schwartz
John G. Shanks
David A. Sheldon
Robert and Irma Sheon
Richard and Denise Shockley
Janet A. Shupe
Helen and Edward Sing

David K. Smith and Marie E. Libal-Smith
Lee Ann Smith and Mark C. Webb
Susan E. Snordland
John L. Snyder, Jr.
Alan B. and Kathryn "Kitch" Somers
David and Alice Starkey
Malcolm and Ellen Stern
Bill and Gayle Stuebe
Tom and Cynthia Swihart
Ellen C. Tamura
Yasuoki Tanaka
Jeffrey R. Tanki
Charlotte H. Templin
Roderick Tidd and Lisa M. Scrivani-Tidd
LCDR Jeffrey Stewart Tunis
Judy Walcoff
George L. Walker and Carolyn M.
Lipson-Walker
Sarah F. Ward
Mary A. Watt and William C. Strieder
Fran and Gene* Weinberg
Kay and Ewing Werlein
Philip and Shandon Whistler
G. C. Wilhoit, Jr.
James and Ruth Witten
Michele Gotz Wolff and Gary Wolff
Sara and Thomas Wood
Jonathan L. Yaeger and Karen Abravanel
Georgia E. Zeichner

*Deceased

Corporations and Foundations

Avery & Greig, LLP
Bloomington Thrift Shop
Community Foundation of Bloomington
and Monroe County

Five Star Quality Care, Inc.
Indiana Nephrology and Internal Medicine
Joshua Bell, Inc.
Meadowood Retirement Community

National Christian Foundation Chicago
Putnam County Community Foundation

Companies Providing Matching Gifts

Eli Lilly & Company
Fidelity Charitable Gift Fund

IBM Corporate Foundation
Schwab Charitable Fund

Vanguard Charitable Endowment Program

Planned Gifts

We are grateful to those individuals who have expressed their interest in ensuring scholarship support for tomorrow's students today by making a planned gift through a testamentary gift in their estate planning by a will or trust, charitable gift annuity, or retirement plan. We are pleased to acknowledge those individuals who have provided gift documentation.

David* and Ruth Albright
Mark and Ann* Bear
Marvin Carmack*
Michael J. Ellis

E. Jane Hewitt and Richard H. Small
Cyndi Dewees Nelson and Dale Nelson
Jean Robinson Peters
Curtis R. and Judy Chapline Simic

LCDR Jeffrey Stewart Tunis
Patricia L. Williams

Memorials and Tributes

Each year, we receive gifts in honor or in memory of individuals whose leadership and good works have enriched the lives of so many. We are pleased to recognize those special individuals and the donors whose gifts they have inspired.

Doris T. Abrams, in memory of Eleanor F. Byrnes
Christine and James Amidon, in honor of Christopher I. Albanese
Anonymous, in memory of Richard Fred Buchholz
Anonymous, in honor of Linda Strommen
Anonymous, in memory of Jeffrey D. Schauss
Jean Carter Appel, in memory of William C. Appel
Lora Avery, in memory of Kitty Tavel
Helen E. Baker and S. Henry Bundles*, in memory of David N. Baker
Lida M. Baker, in memory of David N. Baker
Susan and W. Claude Baker, Jr., in honor of Sandra and Don Freund
Andrea and Brian Barrach, in memory of Dr. Berkley Kalin
Susan D. Bartlett, in memory of William and Dottie Demmon
John E. Bates, in memory of Margaret and Douglas Strong
Jean C. Beckman and Helen L. Templeton, in memory of Willfred C. Bain, D.M. Hon.
Beth and Frederick Behning, in memory of Ruth and Frederick Ebbs
Richard H. Bernhardt, in memory of Jerry R. Hoover
Jerry L. Betar, in memory of Michael G. Betar
Michael and Pamela Bobb, in memory of Virginia and Merrill Burbrink
Bennet and Cynthia Brabson, in memory of Julia Brabson
Anne and James Bright, in memory of Jeffrey D. Schauss
Stanley R. Brubaker, in memory of Jo A. Brubaker
Margaret H. Brummit, in memory of Agnes Davis
Shirley Y. Burger, in memory of David P. Burger
Robin and Sherri Buscha, in memory of Ruth L. Ebbs
Jill and Shaun Byrnes, in memory of Eleanor F. Byrnes
June M. Calkins and Emily J. Livant, in memory of Vera M. O'Lesker
Camerata, Inc. and Lenore S. Hatfield, in memory of Vernon "Keith" Brown and in memory of Edwin D. Anderson
Carol and James Campbell, in memory of Leonard J. Newman and in memory of Luba Dubinsky
George and June Chalou, in memory of Eleanor F. Byrnes
Victor E. Childers, in memory of Anna "Ania" Beczkiewicz
Carolyn F. Clewell, in memory of Eleanor F. Byrnes
Suzanne F. Clewell, in memory of Eleanor F. Byrnes
Karen-Cherie Cogane and Stephen Orel, in memory of Nelson Cogane and in memory of Dorothea Cogane
Barbara S. Cohen, in memory of Leonard J. Newman
Bettina and Richard Cool, in memory of Leonard J. Newman
Darla and Todd Coolman, in honor of Murray Grodner
Edmund and Ruth Cord, in memory of David N. Baker and in honor of Kimberly S. Carballo
Kevin and Sara Coss, in memory of Leonard J. Newman
Christine and Rob Cowan, in honor of Stephen and Jo Ellen Ham
Jean and Doris Creek, in memory of Eleanor F. Byrnes
Joann Crosier, in memory of Jack B. Moore
Charles H. Davis and Debora Shaw, in memory of Leonard J. Newman
Lawrence L. Davis, in memory of Leonard J. Newman
Richard J. Dick, in memory of Kitty Tavel
Elizabeth and Weber Donaldson, in memory of Anna "Ania" Beczkiewicz
Gregory C. Donaldson, in memory of Leonard J. Newman
Michael C. Donaldson and Timothy W. Kittleson, in honor of David H. Jacobs
Judith and Paul Douglas, in memory of Jack B. Moore
Gary and Sandra Dowty, in memory of Leonard J. Newman
James Dukles, Jr., in memory of Eleanor F. Byrnes
Joseph J. Dukles, Sr., in memory of Eleanor F. Byrnes
Linda, Diane, Christine, and Amy Dukles, in memory of Eleanor F. Byrnes
Marc R. Dukles, in memory of Eleanor F. Byrnes
John P. Dyson*, in memory of Frank R. Meeker

Katherine and Thomas Eggleston, in memory of Karen A. Bailey
Stephen A. Ehrlich, in memory of Harold Ehrlich
Lana and Paul Eisenberg, in memory of Leonard J. Newman
Anna A. Ellis, in memory of Charles R. Ellis
Elizabeth and James Ericksen, in honor of Daniel E. Ericksen
Jodie Faber, in memory of Dr. Berkley Kalin
James A. Fechtman, in memory of Kitty Tavel
Paul and Susan Fields, in memory of Jack B. Moore
Marilyn Firestone, in memory of Kitty Tavel
Evelyn and James Fisher, in memory of Eleanor F. Byrnes
Donald and Sandra Freund, in memory of Leonard J. Newman
Ilene and L. Wayne Garrett, in memory of Leonard J. Newman
Nancy and Victor Geiger, in memory of Leonard J. Newman
Marian R. Gillett, in memory of Jack B. Moore
Constance Cook Glen and James Glen, in memory of Kenda M. Webb
Jane E. Gosling, in honor of Ned J. North and in honor of Elizabeth B. North
Richard L. Gray, in memory of Eleanor F. Byrnes
Nagui and Pauline Halim, in memory of Eleanor F. Byrnes
Jo Ellen and Stephen Ham, in memory of Anna "Ania" Beczkiewicz, in memory of Dr. Berkley Kalin, in memory of Leonard J. Newman, in memory of Vera M. O'Lesker, in memory of Catherine A. Smith, and in memory of Dr. Ethel C. Smith
Richard T. Ham and Allison Stites, in memory of Richard and Jeanne Forkner
Josephine Hansen, in honor of Murray Grodner
Don Harp and Richard Lewis, in honor of Henry A. Upper, Jr., D.M.
Jeffry M. Harris, in memory of Karen Shaw
Mary Ann Hart, in memory of Jeffrey D. Schauss
Katherine Hartzell, in honor of Sarah E. Wroth
Craig E. Hartzler and Amy Lynne Stewart, in honor of M. Dee Stewart
Sheila Hawkins, in memory of Roger L. Milholland
Blanche and Charles Herron, in memory of Leonard J. Newman
H. Allan and Helen Heuss, in memory of Leonard J. Newman
Ford D. Hill, in memory of György Sebök
Karol and William Hope, in memory of Prof. János Starker, D.M.
Gretchen G. Horlacher, in honor of Kimberly S. Carballo
Mariann E. Hosler, in memory of Leonard J. Newman
Jennifer Houseknecht, in memory of Kitty Tavel
Jeffrey and Lesa Huber, in memory of Jeffrey D. Schauss
Marcia A. Hughes, in memory of Anne M. Osborne
Gerald and Rena Humerickhouse, in memory of Jack B. Moore
Mary V. Hurwitz, in memory of Robert I. Hurwitz
Indiana Nephrology and Internal Medicine, in memory of Leonard J. Newman
Charles and Laurie Jarrett, in memory of Charles "Charley" W. Jarrett
Richard W. Jesmajian, in honor of Alice I. Jesmajian
Anne and Edward* Jones, in memory of Jeffrey D. Schauss
Neil and Terri Kaback, in memory of Kitty Tavel
Marilyn J. Keiser, in honor of Brent M. Gault
Daniel B. Keough, in memory of Eleanor F. Byrnes
Thomas and Vicki King, in memory of Jeffrey D. Schauss
Beth and Paul Kirk, in memory of Jeffrey D. Schauss
Donald and Julia Klemen, in memory of Marlene J. Bilo
Rita Kohn, in memory of Anna "Ania" Beczkiewicz
Linda and Wayne Koteles, in memory of Eleanor F. Byrnes
Julie and Thomas Lacy, in memory of Jack B. Moore
Richard T. Lathom, in memory of Deanna M. Lathom
Elizabeth A. Latimer, in memory of Leonard J. Newman
Amanda and Scott Lee, in honor of Nathaniel S. Lee
Daniel A. Levin, in memory of David N. Baker
David C. Lowe and Pamela Williamson Lowe, in honor of James K. Campbell
Catherine Madsen, in memory of Thomas Binkley
Norma and Thomas McComb, in memory of George and Elizabeth Krueger
Winnifred L. McGinnis, in memory of Dr. Frank McGinnis

David E. McNeel, in honor of David H. Jacobs
 Michael T. McNelis, in memory of Kitty Tavel
 Susan Minard and Kay Yourist, in honor of William Ennis Thomson
 Victor G. Mishkevich, in memory of Luba Dubinsky
 Marvin H. Mitchell, in memory of Kitty Tavel
 Lorna L. Moir, in memory of Vera M. O'Lesker
 Hannah and Tom Moore, in memory of Leonard J. Newman
 Norman and Nyla Moore, in memory of Jack B. Moore
 Jacqueline and James Morris, in honor of P.E. MacAllister,
 in honor of Dean Gwyn Richards, and in honor of
 Charles H. Webb, Jr., D.M.
 Haruko and Otis Murphy, in honor of Brent M. Gault, Ph.D.
 Lawrence Myers, Jr., in memory of Betty J. Myers
 Jerrold and Virginia Myerson, in memory of Prof. Albert Lazan
 Margaret J. Neely, in memory of Jack B. Moore
 Dale and Cyndi Nelson, in memory of John M. Miller, M.D.
 Delano and Luzetta Newkirk, in honor of Timothy H. Stebbins
 Martha T. Oddo, in memory of Georgann Filak
 Kimberly and Scribner Ochenschlager, in memory of Eleanor F.
 Byrnes
 Olinger Diamond Center, in memory of Leonard J. Newman
 Aoife W. O'Neill, in honor of Cynthia Wolfe
 Wendy P. Ostermeyer, in memory of Dwan V. Hublar
 Charlene and William Parkinson, in memory of Steve L. Zegree
 Mary Ann and Stephen Patterson, in honor of Anelise Berkenstock
 Mildred B. Perry, in memory of Kenneth S. Curtis
 Agnes and Robert J. Plunkert, Jr., in memory of Charles J. Gorham
 Stephen R. Pock and David Blumberg, in memory of Leonard J.
 Newman
 Angeline and Michael Protogere, in memory of Kitty Tavel
 Lori K. Rath, in honor of Edward A. Rath, Jr., D.M.
 Nancy P. Rayfield, in memory of Robert C. Rayfield, D.M.
 Kathaleen Reese, in memory of Frederick C. Ebbs
 David and Leanna Renfro, in honor of Myron Bloom
 Laura Rich, in memory of Kitty Tavel
 Barbara and Gwyn Richards, in memory of Anna "Ania"
 Beczkiewicz, in memory of Edward D. Heath, in memory of
 James W. Jeffries, in memory of Sara J. LeBien, in memory of
 Leonard J. Newman, and in memory of Richard J. Schilling
 Brian and Deborah Richardson, in memory of Jack B. Moore
 Charles and Mary Richardson, in memory of Jack B. Moore
 Edwin and Nancy Richardson, in memory of Jack B. Moore
 Ilona K. Richey, in memory of Leonard J. Newman
 Emma Robinson, in memory of Kitty Tavel
 Randal I. Rosman, in memory of Ella Fitzgerald
 Gail C. Rothrock and Charles L. Trozzo, in memory of
 Eleanor F. Byrnes
 Evan J. Rothstein, in honor of Mark Rothstein
 George A. Rubin, in memory of Eugene Cuba
 Juliet Sablosky, in memory of Irving L. Sablosky
 Frida Saharowici, in memory of Dr. Berkley Kalin
 Marie L. Sanger, in memory of Leonard J. Newman
 Harriet and Neil Schor, in memory of Louis Lemberger
 Judith L. Schroeder, in memory of Leonard J. Newman and
 in memory of Vernon "Keith" Brown
 Jeffrey and Becky Schwartz, in honor of Ray E. Cramer
 Jim and Jamie Self, in honor of Daniel Perantoni
 John and Lorna Seward, in memory of John M. Miller, M.D.,
 and in memory of Leonard J. Newman
 David and Karen Shainberg, in memory of Leonard J. Newman
 Amy Sheon, in memory of Leonard J. Newman
 Irma and Robert Sheon, in memory of Leonard J. Newman

Cecily Shull and Robert Wilson, in memory of Willard M. Shull, Jr.
 Diane M. Siddons and Karl C. Zacker, Jr., in memory of James F.
 Searcy
 Paul H. Sievers, in memory of Nancy J. Sievers
 Sigma Alpha Iota Bloomington Alumnae Chapter, in memory
 of Vernon "Keith" Brown
 Edward and Helen Sing, in memory of Leonard J. Newman
 Patricia B. Smith, in memory of Carl L. Johnson
 Alan and Kathryn Somers, in memory of Vera M. O'Lesker
 and in memory of Jack B. Moore
 Cheryl A. Sorrels, in memory of Jack B. Moore
 Marie F. Speziale, in honor of Edmund Cord
 Holly and Michael Stauffer, in memory of Georgann Filak
 Vera S. Stegmann, in memory of Ulrich W. Weisstein, Ph.D.
 Debra and Michael Steinbuch, in memory of Leonard J. Newman
 Charles and Janet Stenfenagel, in memory of Leonard J. Newman
 P. Bruce Stephenson and Maria K. Schmidt, in honor of Dean
 Gwyn Richard's new granddaughter, Emma Catherine Starr
 George J. Strauser, in memory of Prof. William Shriner
 Ellen Strommen and Linda Strommen, in memory of Leonard J.
 Newman and in memory of Jeffery D. Schauss
 Ellen Strommen, in honor of William and Janet Anderson, in
 memory of Jack King, and in memory of Catherine A. Smith
 Linda Strommen, in honor of Ellen Strommen
 Lewis H. Strouse, in memory of Lewis K. and Cora H. Strouse
 Nobuko and Takao Suzuki, in honor of Brent M. Gault, Ph.D.
 Cynthia and Tom Swihart, in memory of Henry C. Gulick
 Ellen C. Tamura, in memory of Leonard J. Newman
 Lawrence and Sandra Tavel and City Optical Company, Inc.,
 in memory of Thomas R. Lugar and in memory of Robert P.
 Tuerk
 Joyce A. Taylor, in memory of John G. Aylsworth
 Michael and Rebecca Taylor, in memory of Michael G. Betar
 Lawrence Teich, in memory of Leonard J. Newman
 James R. Thrasher, in memory of ViEva and David Thrasher
 Thomas N. Toyama, in memory of David N. Baker
 Rhonda and Thomas Trippel, in memory of Jack B. Moore
 Henry and Celicia Upper, in honor of the wedding of Meghan
 and Trevor
 Brenda and Keith Vail, in memory of George R. Boyd
 Donna and Michael Venturini, in memory of John M. Miller, M.D.
 Martha F. Wailes, in memory of Leonard J. Newman
 Julie and Michael Walker, in honor of Abby Walker
 Sarah F. Ward, in honor of Derek S. Dixon
 Pamela A. West-Carrasco, in memory of Peter E. Eagle
 Gail and Mark Welch, in honor of Amelia C. Welch
 Mary H. Wennerstrom Phillips, in memory of Luba Dubinsky,
 in memory of Vera M. O'Lesker, and in memory of
 Catherine A. Smith
 George and Marion Whatley, in honor of Elizabeth M. Mannion
 Mark Wiedenmayer, in memory of Leonard J. Newman, and in
 honor of Louise Newman
 Anna Lise Wilkins, in memory of Raffaella Stroik
 Patricia L. Williams, in memory of Leonard J. Newman
 James C. Wimbush and Kerry L. West, in honor of David H. Jacobs
 Maryann M. Wirth, in honor of Carol E. Matula
 Andrew M. Wolverton, in memory of Steve L. Zegree
 The Woman's Club, in honor of Dean Gwyn Richards
 Galen Wood, in honor of David H. Jacobs
 Burton and Sheila Yaffie, in memory of Evelyn H. Zolan
 Judith and Steven Young, in honor of Richard L. Saucedo
 Georgia E. Zeichner, in honor of Anita H. Cast

Endowments and Scholarships

The IU Jacobs School of Music gratefully acknowledges those individuals, corporations, and foundations who provide support through endowments and scholarships. The generosity and goodwill of those listed below puts a Jacobs School of Music education within the reach of many. To learn more about investing in our talented students, please contact Melissa Dickson, executive director of external affairs, at dickson9@indiana.edu or 812-855-4656.

Jacobs School of Music

William Adam Trumpet Scholarship
Valerie Adams Memorial Scholarship
Jamey Aebersold Jazz Combo Fund
Jamey and Sara Aebersold Jazz Fellowship
Richard L. and Ann T. Alden Scholarship
Gary J. and Kathy Z. Anderson Scholarship in Music Excellence
Violette Verdy and Kathy Ziliak Anderson Chair in Ballet
John T. and Adelia R. Anderson Music Scholarship
Willi Apel Early Music Scholarship Fund
Applegate Family Music Scholarship
Aronoff Percussion Scholarship
Martha and Fred Arto Music Scholarship
Audio Engineering and Sound Production Endowment
Aungst Scholarship
Stephen A. Backer Memorial Scholarship
Dr. Wilfred C. Bain Music Alumni Association Scholarship
Wilfred C. Bain Opera Scholarship Endowment
David N. Baker Jazz Scholarship
David N. Baker Visiting Artist Series
David N. Baker Professorship
David Baker, Jr. Jazz Scholarship
Ballet Department Fund
Ballet Shoe Fund
Artur Balsam Chamber Music Project
Band Centennial Fund
Anthony and Olimpia Barbera Latin American Music Scholarship
Olimpia Barbera Recording Fund for the Latin American Music Center
Louise Bass and James F. Mellichamp Organ Scholarship
Earl O. Bates Memorial Scholarship
Eric D. Batterman Memorial Scholarship
Joseph Battista Memorial Fund
William Baus Historical Performance Institute Fund for Early Music
"Because You Want To Be Here" Scholarship
Achasa Beechler Music Scholarship Fund
William Bell Memorial Fund
Colleen Benninghoff Music Scholarship
The Michael E. Bent Scholarship
Leonard Bernstein Scholarship
John E. Best Scholarship
Thomas Beversdorf Memorial Scholarship
Neil A. Bjurstrom Horn Scholarship
The Harriett Block Operatic Scholarship
Booher and Bryant Families Brass and Woodwind Music Scholarship
Mary R. Book Music Scholarship Fund
Boonshoff Family Music Scholarship
Ruth Boshkoff Scholarship
Fred Wilkins and Richard W. Bosse Flute Scholarship
Julia Beth Brabson Memorial Fellowship
Julia Brabson Scholarship
Mary E. and Richard H. Bradford Fellowship
Mary E. and Richard H. Bradford Opera Informance Support Fund
Brass Instrument Scholarship
W. Michael Brittenback and William Meezan Organ Scholarship
Frances A. Brockman Scholarship
Warren J. Brodine + Mark A. Rhein Singing Hoosiers Scholarship
Roberta Brokaw Flute Scholarship
A. Peter and Carol V. Brown Research Travel Fund
Kenneth V. & Audrey N. Brown Memorial Scholarship
Malcolm H. Brown Fellowship
Brownlee, Roberts, and White Brothers in Achievement Scholarship
Alonzo and Mary Louise Brummett Scholarship in Music
Sylvia Feibelman Budd and Clarence Budd Scholarship

Marjorie J. Buell Music Scholarship
Marjorie J. Buell Music Scholarship in Excellence
Pamela Buell Music Scholarship
Vivian N. Humphreys Bundy Memorial Scholarship Fund
Peter Burkholder and Doug McKinney Musicology Fund
Peter Burkholder Lecture Fund
Pam and Jack Burks Professorship
Elizabeth Burnham Music Instrument Maintenance Fund
Dorothy Knowles Bush and Russell Jennings Bush Piano Scholarship
The Camerata Scholarship
John and June Canfield Bloomington Pops Scholarship
Joan and Marvin Carmack Scholarship
Robert L. Carpenter Fund
Charles Diven Campbell Piano Scholarship
Susan Cartland-Bode Performance Excellence Scholarship
Susan Cartland-Bode Scholarship
Walter Cffel Memorial Scholarship
Austin B. Caswell Award
Center for the History of Music Theory and Literature Endowment Fund
Alan Chepregi Memorial Scholarship
Choral Conducting Department Enhancement Fund
Lucy and Samuel Chu Piano Scholarship
Emma H. Claus Scholarship Fund
Sarah Clevenger Opera Production Fund
Cleveland Family Music Scholarship
Eileen Cline Music Fund
Richard A. Cohee Choral Performances Fund
Ginny Fisher Cole Singing Hoosiers Scholarship
Composition Department Fund
Cook Band Building Fund
Patricia Sorenson Cox Memorial Scholarship
Don H. and Cynthia McCallister Crago Scholarship
Ray E. Cramer Graduate Scholarship
Ray Cramer Scholarship
Jean and Doris Creek Scholarship in Trumpet
Donna and Jean Creek Scholarship
Donna and Jean Creek Scholarship in Voice
Mavis McRae Crow Music Scholarship Fund
T.F. Culver and Emma A. Culver Scholarship Fund
Jeanette Davis Fund
Pete Delone Memorial Scholarship
Alfonso D'Emilia Scholarship Fund
Department of Musicology Fund
Department of Music Education Fund
Dr. D. Michael Donathan Scholarship
Gayl W. Doster Scholarship in Music
Rostislav Dubinsky Music Scholarship
Jack and Stephany Dunfee Musical Arts Center Fund
Jack and Stephany Dunfee Musical Arts Center Scholarship
Fred Ebbs Memorial Scholarship
Eby Foundation Singing Hoosiers Scholarship
The Jeanette MacDonald-Nelson Eddy Opera Scholarship Fund
Maestro David and Eleanor Arlene Efron Music Conducting Scholarship
David Eissler Memorial Scholarship Fund
Ruth L. Elias Scholarship Fund
Anne Epperson Collaborative Piano Scholarship
Guillermo Espinosa Endowment Fund
Merle Evans Scholarship
Fairview Elementary School String Project
Fairview Elementary School String Project II
Philip Farkas Horn Scholarship

Daniel Feldt Music Scholarship
 Eleanor Fell Scholarship
 Rose and Irving Fell Violin Scholarship
 The Michael J. Finton Scholarship
 Five Friends Master Class Series
 The Philip C. Ford Scholarship in Music
 Ford-Crawford Recital Hall Maintenance Fund
 Frederick A. Fox Composition Scholarship
 William and Marcia Fox Scholarship in Music
 Dr. Frederick and Mary Moffatt Freeburne Teaching Fellowship
 Janie Fricke Scholarship Fund for Aspiring Musicians
 The Friday Musicales Scholarship
 J.N. Garton Memorial Scholarship
 Glenn Gass Scholarship
 Bill and Mary Gasser Scholarship/ Fellowship Endowment
 Lynn E. Gassoway-Reichle Chair in Piano
 Robert Gatewood Opera Fund
 Michael and Judy Geller Double Bass Scholarship
 Cary M. Gerber Scholarship Fund
 Marcella Schahfer Gercken Band Scholarship
 Richard C. Gigax Memorial Scholarship Fund
 Gignilliat Fellowship
 Gignilliat Music Scholarship Fund
 Ellen Cash Gignilliat Fellowship
 Linda C. and Jack M. Gill Chair in Violin
 Linda Challis Gill and Jack M. Gill Music Scholarship
 Gladys Gingold Memorial Scholarship
 Josef Gingold Violin Scholarship Fund
 Charles Gorham Trumpet Scholarship
 St. Luke's UMC/Goulding and Wood Organ Scholarship
 Martin Eliot Grey Scholarship
 Montana L. Grinstead Fund
 Jonathan L. Gripe Fund
 Arthur and Ena Grist Scholarship Fund
 Murray Grodner Double Bass Scholarship
 Wayne Hackett Memorial Harp Scholarship Fund
 Hall Family Music Scholarship
 Jack L. & Dora B. Hamlin Endowed Chair in Piano
 Margaret H. Hamlin Scholarship
 Judith Hansen-Schwab Singing Hoosiers Scholarship
 Harp Department Fund
 Ann Shilling Harrison Bicentennial Scholarship
 Margaret Harshaw Scholarship
 Russell A. Havens Music Scholarship
 Bernhard Heiden Scholarship
 Jascha Heifetz Scholarship
 Eva Heinitz Cello Scholarship Fund
 William Gammon Henry, Jr., Scholarship
 Julius and Hanna Herford Fund for Visiting Scholars and Conductors
 in Choral Music
 Dorothy L. Herriman Scholarship Fund
 Daniel F. Hewins Music Scholarship
 Daniel F. Hewins Vocal Performance Scholarship
 Margaret E. Hillis Memorial Scholarship in Choral Conducting
 Mark H. Hindsley Award for Symphonic Band
 Mark H. Hindsley Endowed Fund for Symphonic Band
 Historical Performance Institute Fund
 Ernest Hoffzimmer Scholarship
 Leonard Hokanson Chamber Music Scholarship
 Georgia Wash Holbeck Fellowship
 David Holcenberg Singing Hoosiers Scholarship
 Yuki Honma Memorial Scholarship
 William T. Hopkins Scholarship
 William S. and Emma S. Horn Scholarship Fund
 Harry and Ruth Houdeshel Memorial Flute Scholarship
 Bruce Hubbard Memorial Scholarship
 Dwan Hublar Music Education Scholarship
 Lawrence P. Hurst Medal in Double Bass
 Thomas Pegg Hustad Jazz Collection Cataloging Fund
 Harriet M. Ivey Music Scholarship
 IU Children's Choir Fund
 IU Jacobs School of Music String Academy Fund
 International Harp Competition
 Barbara and David Jacobs Fellowship
 Barbara and David Jacobs Scholarship
 Barbara and David Jacobs School of Music Enhancement Fund
 David H. Jacobs Chair in Music

David Henry Jacobs Fund
 David Henry Jacobs International Overseas Study Scholarship
 David Henry Jacobs Music Scholarship
 Jacobs Bicentennial Scholars and Fellows in Honor of Charles H. Webb
 Jacobs Chaleff/Dickson Richards Directorship
 Jacobs Endowment in Music
 Jacobs School of Music International Overseas Study Scholarship
 Jacobs School of Music Office of Entrepreneurship & Career
 Development Fund
 Jacobs School of Music Student Support Fund
 Eva Janzer Memorial Fund
 Jazz Double Bass Studio Fund
 Jazz Studies Department Fund
 Wilma Jensen Organ Scholarship
 Dick and Louise Johnson Foundation Music Scholarship
 Ted Jones and Marcia Busch-Jones Musical Arts Center Fund
 Ted Jones Musical Arts Center Executive Director of Production Fund
 Georgina Joshi Composition Commission Award
 Georgina Joshi Fellowship
 Georgina Joshi Fund
 Georgina Joshi Handelian Performance Fund
 Georgina Joshi International Fellowship
 Georgina Joshi Recording Arts Studio Fund
 Thomas R. Kasdorf Choral Conducting Professorship
 Walter and Freda Kaufmann Prize in Musicology Fund
 Mack H. Kay Scholarship for Excellence in Jazz Composition Fund
 Marilyn Keiser Organ Scholarship
 Thomas R. and Alice P. Killey Scholarship in Voice
 Martin Luther King, Jr., Scholarship
 Meredith K. Kirkpatrick Music Scholarship
 Betsy Kiser Scholarship
 Klinefelter Scholarship Fund
 Marilyn Bone Kloss Music Fellowship
 Howard and Linda Klug Clarinet Scholarship
 Eugene J. and Eleanor J. Knapik Fund
 Lucie M. Kohlmeier Music Scholarship in Voice
 Korea Scholarship and Faculty Fund in Music
 Tibor Kozma Instrumental Conducting Scholarship
 Robert Kraus Memorial Scholarship
 Krefeldt-Stewart Scholarship in Voice and Ballet
 Peter and Monika Kroener Dean's International Fellowship in Music
 Peter H. and Monika H. Kroener International Visiting Chair
 in Music
 George and Elizabeth Krueger Scholarship
 Herbert O. Kuebler Music Fellowship
 Michael Kuttner Musical Education Fund
 Robert LaMarchina Music Scholarship
 Latin American Music Center Fund
 James and Kathie Lazerwitz Visiting Artists Fund
 Sara and Robert LeBien Jacobs School of Music Scholarship
 Sara J. and Robert F. Lebien Scholarship
 Sara and Robert LeBien Music Engagement Fund
 Lewis Family Scholarship in Music
 Martha Lipton Scholarship
 Brenda Bailey and G. William Little, Jr. Scholarship
 Brenda Bailey and G. William Little, Jr. Voice Scholarship
 Jay Lovins Memorial Scholarship Fund
 Ethel Louise Lyman Memorial Fund
 P.E. MacAllister Scholarship in Voice
 John Mack Memorial Scholarship in Oboe
 Virginia MacWatters Abec Scholarship
 Patrice Madura Scholarship
 Jeanette Calkins Marchant Friends of Music Scholarship
 Marching Hundred Fund
 Marching Hundred Hall Fund
 Marching Hundred Instrument Fund
 Wilda Gene Marcus Piano Scholarship
 Jay Mark Scholarship in Music
 Georgia Marriott Scholarship
 Richard and Susan Marvin Music Scholarship
 Arthur W. Mason Musical Scholarship Fund
 Matula Family RedStepper Fund
 Mary Justine McClain Opera Theater Fund
 Susan Sukman McCray Scholarship
 Susann McDonald Fund
 Susann McDonald Harp Study Fund
 Katherine V. McFall Scholarship

The William C. McGuire Scholarship
 Nancy and Cyrus C. McNutt Organ Scholarship
 Bernardo and Johanna Mendel Graduate Scholarship for the
 School of Music
 Menke/Webb/Sturgeon, Inc. Fund
 Donald B. and Sonna A. Merk Music Scholarship
 B. Winfred Merrill Scholarship Fund
 Lou and Sybil Mervis String Quartet Fund
 Arthur R. Metz Carillonneur Fund
 Arthur R. Metz Organ Department Fund
 Otto Miessner Memorial Music Scholarship Fund
 Nathan A. and Margaret Culver Miller Memorial Scholarship Fund
 Dorothy Hoff Mitchell Scholarship
 Peter Steed Moench Scholarship
 Jack and Marilyn Moore Graduate Flute Fellowship
 Marcel Mule Scholarship Fund
 Music Dean's Dissertation Prize Endowment Fund
 Music Library Fund
 Music Theory Fund
 Kaili and Ed Myerson Music Scoring for Visual Media Fund
 Nellie Woods Myers Scholarship
 Ben Nathanson Scholarship
 Nina Neal Scholarship Fund
 Robert Erland Neal Music Scholarship
 Delano and Luzetta Newkirk Musical Arts Center Fund
 Otto Nothhacksberger Endowed Chair
 Otto Nothhacksberger Memorial Fund
 Eugene O'Brien Bicentennial Executive Associate Deanship
 Robert O'Hearn Fund
 Robert R. O'Hearn Opera and Ballet Production Fund
 On Your Toes Fund
 Opera Illinois League Scholarship
 Opera Production Fund
 Opera Studies Department Fund
 Bernard Opperman Memorial Fund
 Organ Department Fund
 Juan Orrego-Salas Scholarship
 The Richard & Eleanor Osborn Scholarship Endowment for Music
 Namita Pal Commemorative Award
 Jason Paras Memorial Fund
 Marie Alice and Gilbert Peart Scholarship
 James and Helen Mae Pellerite Music Library Fund
 James & Helen Pellerite Flute Scholarship
 Jackie Pemberton Memorial Scholarship Fund
 Percussion Department Fund
 Doris Klausung Perry Scholarship
 Harry B. Peters Endowed Scholarship
 Harvey Phillips Memorial Scholarship
 Harvey Phillips Tuba-Euphonium Quartet Composition Contest
 Walter and Rosalee Pierce Scholarship in Organ
 Ildebrando Pizzetti Memorial Scholarship Fund
 Cole and Kate Porter Memorial Scholarship
 George E. Powell, III, Scholarship
 Pre-College Ballet Scholarship
 The Presser Foundation Scholarship and the Presser Music Award
 Project Jumpstart Fund
 Garry Lee and Nancy Gray Puckett Scholarship
 Raffaella Stroik Ballet Visiting Artist Series Fund
 Mary and Oswald G. Ragatz Organ Scholarship
 Stanley Ransom Scholarship in Voice
 Robert C. Rayfield Memorial Scholarship
 RedStepper Fund
 RedStepper Scholarship
 Charlotte Reeves Chamber Music Endowment Fund
 Albert L. and Lynn E. Reichle Scholarship in Music
 Albert L. Reichle Chair in Trumpet
 Dorothy Rey Scholarship
 The Sally W. Rhodes Scholarship
 Gwyn and Barbara Richards Family Scholarship
 Gwyn Richards Scholarship
 Agnes Davis Richardson Memorial Scholarship Fund
 John P. Richardson Jr. Violin Scholarship
 The Naomi Ritter Scholarship
 Walter and Dorothy Robert Scholarship Fund
 Murray and Sue Robinson Ballet Scholarship in Honor of Violette Verdy
 Louise Roth Scholarship
 Leonard & Maxine Ryan Memorial Fund

Barbara Kinsey Sable Voice Scholarship
 Rosetta Samarotto Memorial Scholarship
 Roy and Mary Samuels Scholarship
 Elizabeth Schaefer Memorial Scholarship
 William Charles Schell and Maria Michalewski Schell Memorial
 Scholarship
 Richard J. Schilling Collaborative Piano Scholarship in Honor of
 Charles H. Webb
 Lee Edward Schroeder Endowed Scholarship
 Scott Schurz Music Scholarship
 Michael L. Schwartzkopf Singing Hoosiers Fund
 Gyorgy Sebok Scholarship in Piano
 Jim and Jamie Self Tuba Scholarship
 Ruth Parr Septer Scholarship Fund
 John and Lorna Seward Organ Maintenance Fund
 Maidee H. and Jackson A. Seward Organ Fund
 Maurice F. Shadley Scholarship
 Dr. Karen Shaw Doctoral Piano Fellowship
 Odette Fautret Shepherd Endowed Scholarship or Teaching
 Assistantship
 Sandra Brown Sherman Scholarship
 W. Richard Shindle Musicology Fund
 Terry C. Shirk Memorial Scholarship Fund
 Shulz Memorial Fund
 Curtis R. Simic Dean's Discretionary Fund
 Singing Hoosiers Endowment
 Singing Hoosiers Travel Fund
 Jean Sinor Memorial Lecture Series
 Jerry E. Sirucuk Memorial Scholarship
 Samuel and Martha Siurua Scholarship Fund
 Susan Slaughter Trumpet Scholarship
 George P. Smith II Chair in Music
 Marie-Louise A. Smith Recorder Pedagogy and Performance Fund
 John Winston Spanier Classical Piano Fellowship
 János Starker Cello Scholarship
 Dorothy Richard Starling Chair in Violin Studies
 Charlotte Steinwedd Scholarship
 M. Dee Stewart Brass Music Education Scholarship
 Evelyn P. Stier Memorial Scholarship Fund
 Edward M. Stochowicz Memorial Scholarship
 Strings Department Fund
 Douglas and Margaret Strong Scholarship
 Mark Sudeith Collaborative Piano Scholarship
 Harry Sukman Memorial Scholarship Fund
 Robert D. Sullivan Music Scholarship
 Judy and Gregg Summerville Music Scholarship
 R. Michael Suttle Trumpet Entrepreneur Scholarship
 Elsie L. Sweeney Memorial Scholarship
 The Maxine Rinne Talbot Music Scholarship
 Donald L. Tavel Memorial Scholarship
 Elizabeth Schaefer Tenreiro Scholarship Fund
 Marcie Tichenor Scholarship
 Mary Coffman Tilton Harpsichord Fellowship
 Hans and Alice B. Tischler Endowment
 Giorgio Tozzi Scholarship
 Trombone Artistic Activity Fund
 Sarah Joan Tuccelli-Gilbert Memorial Fellowship in Voice
 Henry A. Upper Chair in Music
 Andy and Celicia Upper Scholarship
 Roe Van Boskirk Memorial Scholarship in Piano Fund
 Carl G. and Mazelle Van Buskirk Memorial Scholarship Fund
 Jon Vickers Film Scoring Award
 Vocal Jazz Ensemble Fund
 Robert J. Waller Sr. and Robert J. Waller Jr. Professorship of Jazz
 William J. and Betty J. Wampler Scholarship
 Dean Charles H. Webb Chair in Music
 Charles and Kenda Webb Music Excellence Fund
 Charles H. Webb Music Scholarship
 Anna Weber Endowment Fund
 Michael Weiss Fund
 Wennerstrom Music Theory Associate Instructor Fellowship
 Mary Wennerstrom Phillips and Leonard M. Phillips Endowment
 Wennerstrom-Phillips Music Library Directorship Endowment
 Wennerstrom-Phillips Piano Scholarship
 Allen R. and Nancy A. White Instrument Fund
 Allen R. and Nancy A. White Music Scholarship
 Lawrence R. & Vera I. White Music Scholarship

Kenneth C. Whitener Fund for Ballet Excellence
Beth Stoner Wiegand Endowed Clarinet Scholarship
Fred Wilkins and Richard W. Bosse Flute Scholarship
Camilla Williams Voice Scholarship
Patricia and Robert Williams Scholarship in Piano
Robert E. Williams Singing Hoosiers Scholarship
Bill and Lenis Williamson Music Scholarship
Madge Wilson Music Scholarship Fund
Carol A. Wiegler Memorial Fellowship
Marjorie Schlamp Winters Scholarship Fund
Janet Corday Won Memorial Scholarship

Woodwind and the Brasswind Scholarship Fund
Woodwinds Department Fund
Mildred F. Yoder Scholarship
Laura S. Youens-Wexler Musicology Travel Fund
Steve Zegree Vocal Jazz Scholarship
Avedis Zildjian Percussion Scholarship
Asher G. Zlotnik Scholarship
Lennart A. von Zwegberg Cello Scholarship
Loretta Fatland Zygmunt Scholarship
Walter A. Zygmunt Scholarship

The Society of the Friends of Music

Friends of Music David Albright Memorial Scholarship
Margaret K. Bachman Friends of Music Piano Scholarship
Friends of Music Robert M. Barker Scholarship in honor of
Patsy Fell-Barker
Friends of Music Patsy Fell-Barker Scholarship in honor of my family
Thomas J. Beddow & Joseph W. Nordloh Memorial Friends of
Music Scholarship
Alan P. Bell Memorial Friends of Music Scholarship
George A. Bilque, Jr. Friends of Music Scholarship
Helen and Leland Butler Friends of Music Scholarship
Eleanor Jewell Byrnes Friends of Music Piano Scholarship
Marvin Carmack Friends of Music Scholarship
Joan and Marvin Carmack Friends of Music Scholarship
Anita Hursh Cast Friends of Music Scholarship
Esther Ritz Collyer Piano Scholarship
Cristini Friends of Music Scholarship
The Patsy Earles Friends of Music Scholarship
Robert A. Edwards Friends of Music Scholarship
Marianne V. Felton Friends of Music Scholarship in Voice
Richard S. and Jeanne Hardy Forkner Friends of Music Scholarship
Joyce and Jim Grandorf Friends of Music Scholarship
Marjorie F. Gravit Friends of Music Piano Scholarship
Marjorie Gravit Friends of Music Scholarship Fund
Haddawi and Schurz Friends of Music Guarantor Scholarship
Friends of Music Haddawi Scholarship

Lawrence and Celeste Hurst Double Bass Friends of Music Scholarship
The Alice V. Jewell and David B. Mills Friends of Music Scholarship
Jeanette Calkins Marchant Friends of Music Scholarship
Perry J. Maull Friends of Music Travel Fund
The Karl and Vera O'Lesker Friends of Music Scholarship
Joanne E. Passet Ph.D. & Deborah S. Wehman D.P.M. Friends of
Music Scholarship
Mary Jane Reilly Friends of Music Scholarship
Dagmar K. Riley Friends of Music Scholarship
Samuel E. Ross Friends of Music Scholarship
Dr. Richard Schilling-Ruth Tourner Friends of Music Voice Scholarship
Scott C. and Kathryn Schurz Friends of Music Scholarship
Scott C. and Kathryn Schurz Friends of Music Scholarship II
The Scott C. and Kathryn Schurz Latin American Friends of Music
Scholarship
Mr. and Mrs. Jake Shainberg and Mr. and Mrs. David Newman
Friends of Music Scholarship
Society of the Friends of Music Fund
Society of the Friends of Music of Indiana University Scholarship Fund
Ruth E. Thompson Friends of Music Scholarship
Kenda Webb Friends of Music Scholarship
Ulrich Weisstein Friends of Music Scholarship in Voice
Herman B Wells Memorial Friends of Music Scholarship
Patricia L. Williams Friends of Music Scholarship

Special thanks to

All those who were able to join us for the inaugural Jacobs Season Celebration event on Saturday, September 7. It was a magical evening, made all the more special by your attendance!

Carol, B.M.E.'74, and John Cornwell, B.A.'73, and the Cheerful Heart Mission for five consecutive years of outstanding partnership with the IU Jacobs School of Music and our Music Education students, sending them, and Jacobs School faculty, to the Dominican Republic and Haiti to provide music education for the youth in those countries.

Alumnus Rick Marvin for spending countless hours organizing, programming, and leading the IU Jacobs School of Music's first-ever partnership with Film Independent in Los Angeles, which provided an unparalleled industry experience for our Music Scoring for Visual Media students.

Indiana University Jacobs School of Music Opera Theater Production Staff

General Manager and David H. Jacobs	
Bicentennial Dean	Dean Gwyn Richards
Ted Jones Executive Director of Production	Timothy Stebbins
Director of Coaching and Music Administration	Kevin Murphy
Director of Opera Choruses	Walter Huff
Executive Administrator of Instrumental Ensembles.	Thomas Wieligman
Coordinating Opera Coach.	Kimberly Carballo
Coach Accompanists	Charles Prestinari, Shuichi Umeyama
Production Stage Manager	Trevor Regars
Assistant Stage Managers	Tess Bladow, Traci Clapper
Administrative Production Assistant	Catherine Compton
Technical Director	Robert Brown
Assistant Technical Director	Jeffrey Porter
Director of Paint and Props.	Mark F. Smith
Properties Manager	Gwen Law
Costume Shop Manager	Dana Tzvetkov
Costume Shop Projects Manager	Soraya Noorzad
Wardrobe Supervisor	Sarah Akemon
Wigs and Makeup Designer	Eileen Jennings
Lighting Supervisor.	Ken Phillips
Master Electrician.	Jacob Lish
Video Programmer	Blake Manns
Stage Carpenters	Ken D’Eliso, Andrew Hastings
Director of Audio Engineering and	
Sound Production	Konrad Strauss
Manager of Audio Operations	Haley Strong
Director of Music Information Technology Services	Philip Ponella
IUMusicLive! Streaming Technician	Tony Tadey
Executive Director of External Affairs.	Melissa Dickson
Director of Communications	Robin Lasek
Assistant Director of Communications	Linda Cajigas
Digital Communications Manager	Hallie Geyh
Program and Calendar Editor.	Jonathan Shull
Communications Assistant	Kaylee Davis
Ticketing, Sales, and House Manager.	John Porter
Travel and Housing Manager	Stephanie Gott
Opera Office Graduate Assistant	Tiffany Choe
Graphic Designers	Kaye Lee Johnston, Michelle Moss
Web Designer.	Michelle Moss
Stage Assistant	Hannah Davis
Electrics Assistants	Blake Christ, Betsy Wray
Scenic Artists	Rebeca Greenan, Amber McKoy
First Hands	Wendy Langdon, Sarah Travis Noriko Zulkowski
Supertitle Operator	Hallie Chadsey



JACOBS SCHOOL OF MUSIC

FOOD & BEVERAGE

Visit the MAC lobby
for hard and soft drinks,
and snacks through the
last intermission.



Please note: Food and beverages are not allowed in the Musical Arts Center auditorium, with the exception of the commemorative *Parsifal* tumbler, available while supplies last.



JACOBS SCHOOL OF MUSIC

Indiana University Bloomington

LE NOZZE DI FIGARO

Wolfgang Amadeus Mozart

Sept. 20, 21, 27, 28 | 7:30 p.m.

DARK MEETS LIGHT

Fall Ballet

*Balanchine, Tudor, Saunders,
and Morris*

Oct. 11, 12 | 7:30 p.m.

Oct. 12 | 2 p.m.

PARSIFAL

Richard Wagner

Nov. 10 | 2:30 p.m.

Nov. 13, 16 | 6:00 p.m.

THE NUTCRACKER

Peter Ilyich Tchaikovsky

Dec. 5, 6, 7 | 7:30 p.m.

Dec. 7, 8 | 2 p.m.

HOLIDAY CELEBRATION

Jacobs School Faculty and Students

Dec. 14 | 7:30 p.m.

SUOR ANGELICA / GIANNI SCHICCHI

Giacomo Puccini

Feb. 7, 8, 14, 15 | 7:30 p.m.

LA TRAVIATA

Giuseppe Verdi

Feb. 28, 29, & Mar. 6, 7 | 7:30 p.m.

JACOBS LIVE AT THE MOVIES

Mar. 27, 28 | 7:30 p.m.

CINDERELLA

Spring Ballet

Sergei Prokofiev

Apr. 3, 4 | 7:30 p.m.

Apr. 4, 5 | 2 p.m.

SINGING HOOSIERS SPRING CELEBRATION

70th Anniversary

Apr. 11 | 7:30 p.m.

JAZZ CELEBRATION

Jacobs School Faculty and Students

Apr. 18 | 7:30 p.m.

INDIANA UNIVERSITY
JACOBS SCHOOL OF MUSIC
SEASON INFORMATION
AND TICKETS

operaballet.indiana.edu

Musical Arts Center Box Office

Monday-Friday, 11:30-5:30

812-855-7433

